

Rittal – The System.

Faster – better – everywhere.

▶ LED steady light component for signal pillars, modular – SG 2372.010

Date : Feb 5, 2018

ENCLOSURES

POWER DISTRIBUTION

CLIMATE CONTROL

IT INFRASTRUCTURE

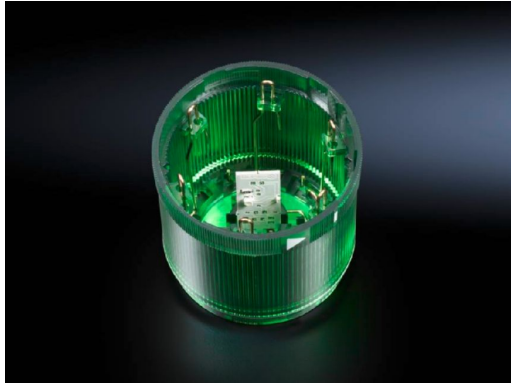
SOFTWARE & SERVICES

FRIEDHELM LOH GROUP



LED steady light component for signal pillars, modular – SG 2372.010

created: 05.02.2018 on www.rittal.com/com-en



Product description

Design:	LED steady light component
Description:	With 360° signal transmission thanks to optimised prism system. Number of potential stages = 5 components, with identical voltage.
Benefits:	Simple assembly and contact via bayonet fastener. Configuration of up to five components with the same voltage. Components are available in a range of colours and voltages.
Function principle:	A modular layout is possible with connection, optical and acoustic components, incandescent lamps and a label panel.
Material:	Enclosure of polyamide Cap: Transparent polycarbonate
Colour:	Green
Protection category IP to IEC 60 529:	IP 54 if a cover or acoustic component is fitted at the top

Product features

Dimensions:	Height: 56 mm Diameter: 70 mm
Rated operating voltage:	24 V (AC/DC)
Diameter:	70 mm

Rated current:	(max.): 25 mA
Rated insulation voltage:	250 V AC
Rated impulse withstand voltage, phase to phase:	2500 V AC
Packs of:	1 pc(s).
Weight/pack:	0.09 kg
EAN:	4028177220188
Customs tariff number:	85311095
ETIM 6.0:	EC000232
ETIM 5.0:	EC000232
eCl@ss 8.0/8.1:	27371220
eCl@ss 7.0/7.1:	27371220
eCl@ss 6.0/6.1:	27371220
eCl@ss 5.1/5.1.4:	27371220
Product description (long):	SG LED steady light component, for signal pillar, modular, 24 V AC/DC, 25 mA, green
Approvals	
Approvals:	C-UL UL + C-UL UR
Certificates:	EAC
Declarations:	Declaration of conformity