

Rittal – The System.

Faster – better – everywhere.

Protective roof for AX – AX 2473.010

Date : Jan 29, 2020

ENCLOSURES

POWER DISTRIBUTION

CLIMATE CONTROL

IT INFRASTRUCTURE

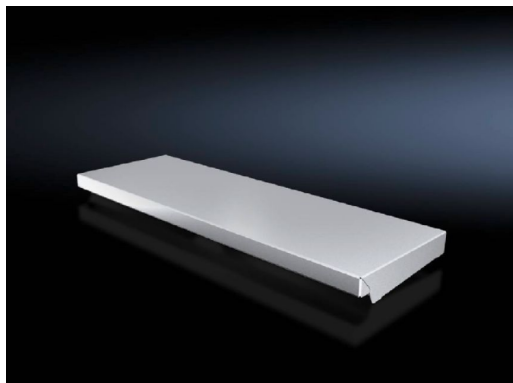
SOFTWARE & SERVICES

FRIEDHELM LOH GROUP



Protective roof for AX – AX 2473.010

created: 29.01.2020 build on www.rittal.com/uk-en



Product description

| | |
|-------------------------|---|
| Description: | The sloping protective roof reliably protects the enclosure from standing moisture and other soiling from above. It can be attached to the enclosure without any machining. |
| Material: | Stainless steel 1.4301 (AISI 304) |
| Surface finish: | Brushed, grain 240 |
| Supply includes: | Assembly parts |

Product features

| | |
|--------------------------------------|--|
| To fit: | Enclosure type: AX Width: = 600 mm Depth: = 210 mm |
| Dimensions: | Height: 37 mm |
| Packs of: | 1 pc(s). |
| Copper weight (kg per piece): | 0 |
| EAN: | 4028177938236 |
| Customs tariff number: | 94039010 |
| ETIM 7.0: | EC000744 |
| ETIM 6.0: | EC000744 |

| | |
|-----------------------------|--|
| eCl@ss 8.0/8.1: | 27182405 |
| eCl@ss 6.0/6.1: | 27182405 |
| Product description: | AX Prot. roof, for WD: 600x210 mm, stainless steel |
