

Rittal – The System.

Faster – better – everywhere.

Interface flaps, modular – SZ 2482.330

Date : Aug 17, 2015

ENCLOSURES

POWER DISTRIBUTION

CLIMATE CONTROL

IT INFRASTRUCTURE

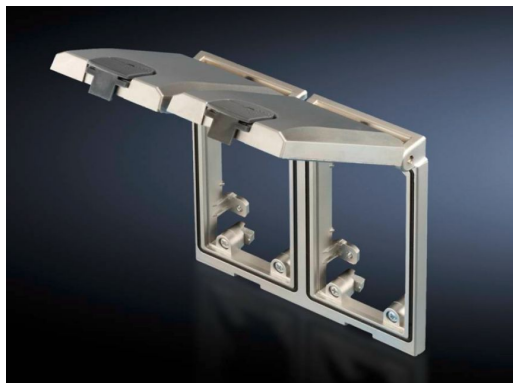
SOFTWARE & SERVICES

FRIEDHELM LOH GROUP



Interface flaps, modular – SZ 2482.330

created : 17.08.2015 on www.rittal.com/com-en



Product description

Description:	For universal use in all situations where rapid access to interfaces and sockets is needed. The affected enclosure remains closed and is therefore protected from ambient influences and unauthorised access.
Function principle:	The mounting frame has a flap which snaps into position in various stages at opening angles of 90 to 180°. A snap fastener ensures reliable sealing. This may be locked if required. All SUB-D interfaces may be rotated while in use
Material:	Mounting frame and metal flap: Fine die-cast zinc Plastic flap: Polycarbonate (semi-transparent) Lock: Polycarbonate
Surface finish:	Mounting frame and metal flap: Matt nickel-plated
Colour:	Lock: RAL 7024 Screw terminals: yellow (RAL 1016)
Protection category IP to IEC 60 529:	IP 65 with sealed flap and proper assembly
Packs of:	1 pc(s).
EAN:	4028177490680
Customs tariff number:	85369085
eCl@ss 5.1:	27189238
eCl@ss 7.0:	27189234

ETIM 6.0: EC002625

Product features

Design: Mounting frame, double, with metal flap
Note: Electrically conductive


Installation options: As programming interface for controllers
As maintenance access for networks
For temporary connection of additional equipment
For quick connection to existing network structures
For programming and maintenance of integral components

Weight/pack: 0.62 kg

Approvals

Approvals:  [C-UR \(EN\)](#)

Downloads

Documentation:  [Info sheet \(FR, IT, ES, DE, EN, PT\)](#)

CAD drawings: Request
