

# Rittal – The System.

Faster – better – everywhere.

## ► Base/plinth, complete, 100 mm Stainless steel for TP stainless steel – SO 2856.000

Date : Mar 27, 2014

ENCLOSURES

POWER DISTRIBUTION

CLIMATE CONTROL

IT INFRASTRUCTURE

SOFTWARE & SERVICES

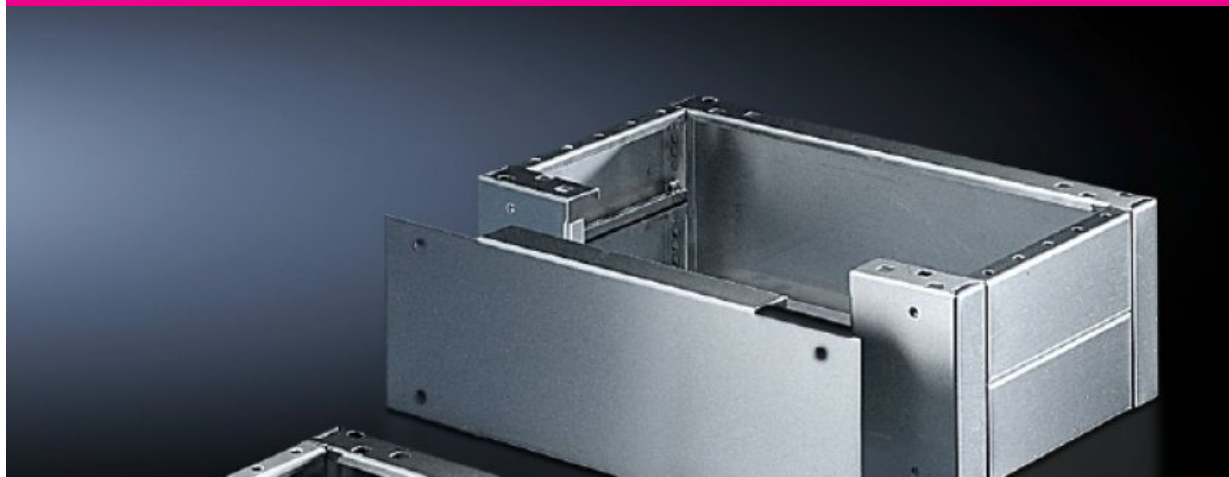
FRIEDHELM LOH GROUP



# Base/plinth, complete, 100 mm Stainless steel for TP stainless steel – SO 2856.000

created : 27.03.2014 on www.rittal.com/com-en

**Discontinued product**



## Product description

### Description:

- Where necessary, 2 base/plinths may be installed one above the other.

### Material:

- Stainless steel 1.4301 (AISI 304)

### Surface finish:

- Brushed

### Supply includes:

- 2 trim panels, side
- 2 trim panels front/rear
- Mounting accessories for mounting on the enclosure.

### Packs of:

- 1 pc(s).

### EAN:

- 4028177033474

### Customs tariff number:

- 94039010

## Product features

### To fit:

- Enclosure type: ES 5000
- PC-ES stainless steel

- One-piece console, stainless steel
  - Width: 800 mm
  - Depth: 600 mm
- 


**Dimensions:**

- Height: 100 mm

---

**Downloads**

**Data sheets:**

-  [Technical data sheet \(EN\)](#)
-

# Rittal – The System.

---

**Faster – better – everywhere.**

- Enclosures
- Power distribution
- Climate Control
- IT Infrastructure
- Software & services

Rittal GmbH & Co. KG  
Postfach 1662 · D-35726 Herborn  
Phone: +49 (0) 2772 505-0 · Fax: +49 (0) 2772 505-2319  
E-Mail: [info@rittal.com](mailto:info@rittal.com) · [www.rittal.com](http://www.rittal.com)

ENCLOSURES

POWER DISTRIBUTION

CLIMATE CONTROL

IT INFRASTRUCTURE

SOFTWARE & SERVICES



FRIEDHELM LOH GROUP