

Rittal – The System.

Faster – better – everywhere.

► Base/plinth, complete Sheet steel for AE, TP universal console – SO 2903.200

Date : Mar 31, 2014

ENCLOSURES

POWER DISTRIBUTION

CLIMATE CONTROL

IT INFRASTRUCTURE

SOFTWARE & SERVICES

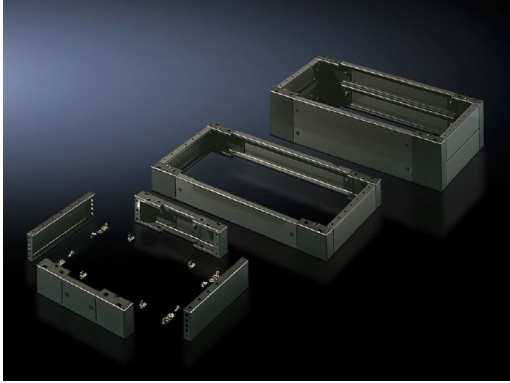
FRIEDHELM LOH GROUP



Base/plinth, complete Sheet steel for AE, TP universal console – SO 2903.200

created : 31.03.2014 on www.rittal.com/com-en

Discontinued product



Product description

Description:

- Trim panels at the front and rear with fitted corner pieces and side trim panels.

Material:

- Sheet steel

Surface finish:

- Spray-finished

Colour:

- RAL 7022

Supply includes:

- Assembly parts for mounting on the enclosure
- 4 corner pieces
- 2 trim panels front/rear
- 2 trim panels, side

Packs of:

- 1 pc(s).

EAN:

- 22730

Customs tariff number:

- 94039010

Product features


To fit:

- Enclosure type: ES 5000
 - TP universal console
 - Width: 1800 mm
 - Depth: 500 mm
-

Dimensions:

- Height: 100 mm
 - Depth: 450 mm
-

Downloads**Data sheets:**

-  [Technical data sheet \(EN\)](#)
-