

Rittal – The System.

Faster – better – everywhere.

► Base/plinth, complete Sheet steel for AE, TP universal console – SO 2904.200

Date : Mar 31, 2014

ENCLOSURES

POWER DISTRIBUTION

CLIMATE CONTROL

IT INFRASTRUCTURE

SOFTWARE & SERVICES

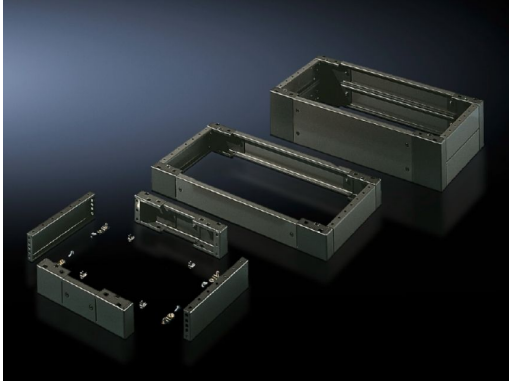
FRIEDHELM LOH GROUP



Base/plinth, complete Sheet steel for AE, TP universal console – SO 2904.200

created : 31.03.2014 on www.rittal.com/com-en

Discontinued product



Product description

Description:

- Trim panels at the front and rear with fitted corner pieces and side trim panels.

Material:

- Sheet steel

Surface finish:

- Spray-finished

Colour:

- RAL 7022

Supply includes:

- Assembly parts for mounting on the enclosure
- 4 corner pieces
- 1 trim panel front/rear x 200 mm
- 2 trim panels front/rear x 100 mm
- 4 trim panels, side

Packs of:

- 1 pc(s).

EAN:

- 22735

Customs tariff number:

- 94039010

Product features

To fit:


- Enclosure type: ES 5000
- TP universal console
- Width: 1800 mm
- Depth: 500 mm

Dimensions:

- Height: 200 mm
- Depth: 450 mm

Downloads

Data sheets:

-  [Technical data sheet \(EN\)](#)