

Rittal – The System.

Faster – better – worldwide.

Sheet steel wiring plan pockets – TS 4115.500

Date : Dec 19, 2013

ENCLOSURES

POWER DISTRIBUTION

CLIMATE CONTROL

IT INFRASTRUCTURE

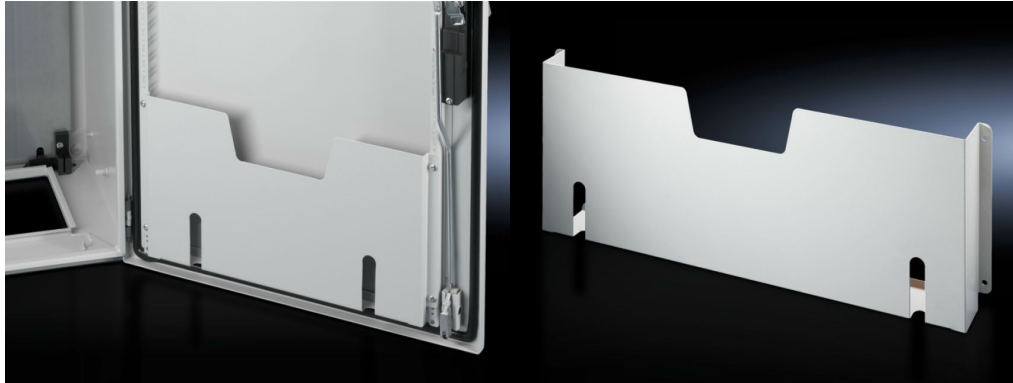
SOFTWARE & SERVICES

FRIEDHELM LOH GROUP



Sheet steel wiring plan pockets for TS, CM, ES, PC, TP pedestal – TS 4115.500

created : 19.12.2013 on www.rittal.com/com-en



Product description

Description: For fastening to tubular door frames at any height.

Colour: RAL 7035

Supply includes: Assembly screws

Packs of: 1 pc(s).

EAN: 4028177526303

Customs tariff number: 73269098

Product features

Dimensions: Depth: 35 mm

To fit door width: 500 mm

Clearances: Clearance width: 355 mm
Clearance height: 210 mm

Approvals

Certificates Sorry, there is currently no information available

Declarations Sorry, there is currently no information available

Approvals	Sorry, there is currently no information available
Downloads / CAD	
Documentation	Sorry, there is currently no information available
Characteristic curves	Sorry, there is currently no information available
Videos	Sorry, there is currently no information available
Data sheets	Sorry, there is currently no information available
CAD-Drawing	Sorry, there is currently no information available
Treiber/Software	Sorry, there is currently no information available

Rittal – The System.

Faster – better – worldwide.

- Enclosures
- Power distribution
- Climate control
- IT Infrastructure
- Software & services

Rittal GmbH & Co. KG
Postbox 1662 · D-35726 Herborn
Phone +49(0)2772 505-0 · Fax +49(0)2772 505-2319
E-Mail: info@rittal.com · www.rittal.com

ENCLOSURES

POWER DISTRIBUTION

CLIMATE CONTROL

IT INFRASTRUCTURE

SOFTWARE & SERVICES

FRIEDHELM LOH GROUP

