

# Rittal – The System.

Faster – better – everywhere.

► **Wiring plan pockets  
of sheet steel for TS,  
CM, SE, PC, TP  
pedestal – PS  
4116.000**

Date : Nov 7, 2018

ENCLOSURES

POWER DISTRIBUTION

CLIMATE CONTROL

IT INFRASTRUCTURE

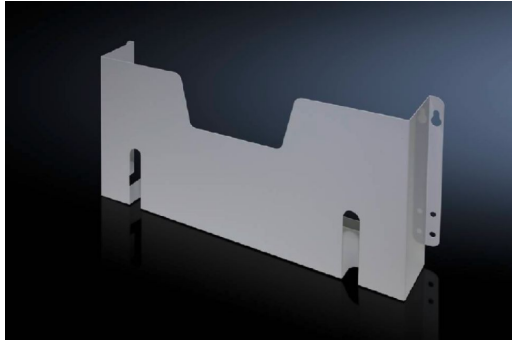
SOFTWARE & SERVICES

FRIEDHELM LOH GROUP



# Wiring plan pockets of sheet steel for VX, TS, CM, SE, PC, TP pedestal – PS 4116.000

created: 07.11.2018 on [www.rittal.com/com-en](http://www.rittal.com/com-en)



## Product description

**Description:** For fastening to tubular door frames at any height.

**Colour:** RAL 7035

**Supply includes:** Assembly parts

## Product features

**Dimensions:** Depth: 90 mm

**To fit door width:** 600 mm

**Clearances:** Clearance width: 455 mm  
Clearance height: 210 mm

**Packs of:** 1 pc(s).

**Weight/pack:** 2.16 kg

**EAN:** 4028177091818

**Customs tariff number:** 73269098

**ETIM 6.0:** EC000317

**ETIM 5.0:** EC000317

<b>eCl@ss 8.0/8.1:</b>	27189267
<b>eCl@ss 7.0/7.1:</b>	27189267
<b>eCl@ss 6.0/6.1:</b>	27189267
<b>eCl@ss 5.1/5.1.4:</b>	27189236
<b>Product description (long):</b>	PS Wiring plan pockets, for TS, CM, SE, PC, TP pedestal, sheet steel, for door width: 600 mm, D: 90 mm