

# Rittal – The System.

Faster – better – worldwide.

## ► Sheet steel wiring plan pockets – TS 4116.500

Date : Dec 18, 2013

ENCLOSURES

POWER DISTRIBUTION

CLIMATE CONTROL

IT INFRASTRUCTURE

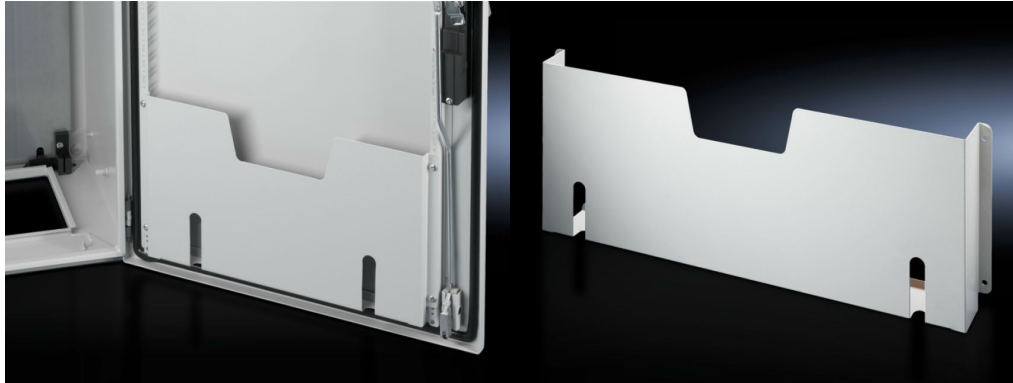
SOFTWARE & SERVICES

FRIEDHELM LOH GROUP



# Sheet steel wiring plan pockets for TS, CM, ES, PC, TP pedestal – TS 4116.500

created : 18.12.2013 on [www.rittal.com/com-en](http://www.rittal.com/com-en)



## Product description

**Description:** For fastening to tubular door frames at any height.

**Colour:** RAL 7035

**Supply includes:** Assembly screws

**Packs of:** 1 pc(s).

**EAN:** 4028177526310

**Customs tariff number:** 73269098

## Product features

**Dimensions:** Depth: 35 mm

**To fit door width:** 600 mm

**Clearances:** Clearance width: 455 mm  
Clearance height: 210 mm

## Approvals

**Certificates** Sorry, there is currently no information available

**Declarations** Sorry, there is currently no information available

<b>Approvals</b>	Sorry, there is currently no information available
<b>Downloads / CAD</b>	
<b>Documentation</b>	Sorry, there is currently no information available
<b>Characteristic curves</b>	Sorry, there is currently no information available
<b>Videos</b>	Sorry, there is currently no information available
<b>Data sheets</b>	Sorry, there is currently no information available
<b>CAD-Drawing</b>	Sorry, there is currently no information available
<b>Treiber/Software</b>	Sorry, there is currently no information available

# Rittal – The System.

---

**Faster – better – worldwide.**

- Enclosures
- Power distribution
- Climate control
- IT Infrastructure
- Software & services

Rittal GmbH & Co. KG  
Postbox 1662 · D-35726 Herborn  
Phone +49(0)2772 505-0 · Fax +49(0)2772 505-2319  
E-Mail: [info@rittal.com](mailto:info@rittal.com) · [www.rittal.com](http://www.rittal.com)

ENCLOSURES

POWER DISTRIBUTION

CLIMATE CONTROL

IT INFRASTRUCTURE

SOFTWARE & SERVICES

FRIEDHELM LOH GROUP

