

Rittal – The System.

Faster – better – worldwide.

Connection accessories – SZ 4315.820

Date : Jan 14, 2014

ENCLOSURES

POWER DISTRIBUTION

CLIMATE CONTROL

IT INFRASTRUCTURE

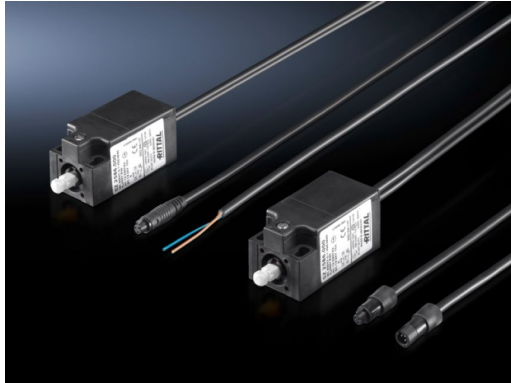
SOFTWARE & SERVICES

FRIEDHELM LOH GROUP



Connection accessories for LED system light – SZ 4315.820

created : 14.01.2014 on www.rittal.com/com-en



Product description

Packs of: 1 pc(s).

EAN: 4028177630178

Customs tariff number: 85369085

Product features

Design: Door operated switch with LED interconnecting cable

Length: 1000 mm

Approvals

Certificates Sorry, there is currently no information available

Declarations Sorry, there is currently no information available

Approvals Sorry, there is currently no information available

Downloads / CAD

Documentation Sorry, there is currently no information available

Characteristic curves Sorry, there is currently no information available

Videos Sorry, there is currently no information available

Data sheets	Sorry, there is currently no information available
CAD-Drawing	Sorry, there is currently no information available
Treiber/Software	Sorry, there is currently no information available

Rittal – The System.

Faster – better – worldwide.

- Enclosures
- Power distribution
- Climate control
- IT Infrastructure
- Software & services

Rittal GmbH & Co. KG
Postbox 1662 · D-35726 Herborn
Phone +49(0)2772 505-0 · Fax +49(0)2772 505-2319
E-Mail: info@rittal.com · www.rittal.com

ENCLOSURES

POWER DISTRIBUTION

CLIMATE CONTROL

IT INFRASTRUCTURE

SOFTWARE & SERVICES

FRIEDHELM LOH GROUP

