

Rittal – The System.

Faster – better – worldwide.

Support rails – PS 4398.000

Date : Jan 8, 2014

ENCLOSURES

POWER DISTRIBUTION

CLIMATE CONTROL

IT INFRASTRUCTURE

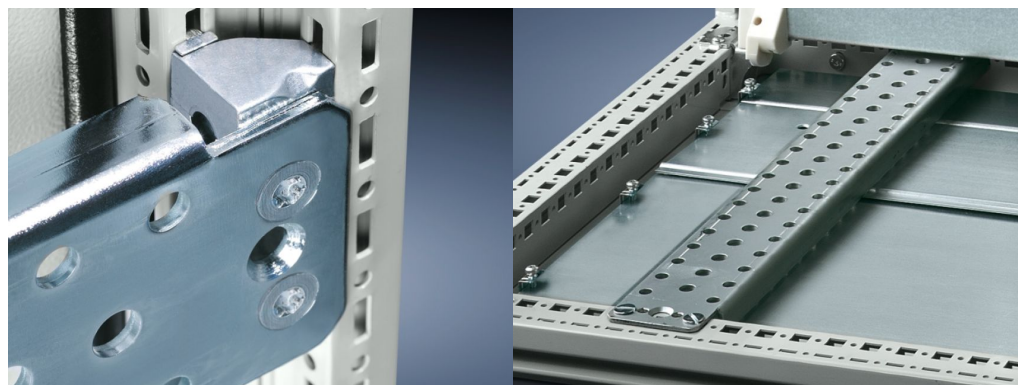
SOFTWARE & SERVICES

FRIEDHELM LOH GROUP



Support rails for TS, SE – PS 4398.000

created : 08.01.2014 on www.rittal.com/com-en



Product description

Description: For heavy installations. Particularly suitable for the installation of base isolators.

Material: Sheet steel

Surface finish: zinc-plated

Supply includes: Assembly parts

Packs of: 4 pc(s).

EAN: 4028177100411

Customs tariff number: 73269098

Product features

Design: slotted

To fit: Enclosure type/Width/Depth
TS 8/800/800
SE 8
CM

Installation options: On the vertical TS enclosure section: Via snap-on nut TS 8800.808, via adaptor rail for PS compatibility, offset in the height, via TS punched rail 25 x 38 mm.
On the horizontal TS enclosure section: in the width, in the depth
On the ES system punchings, in the enclosure depth
On base configuration rail for CM

Approvals

Certificates Sorry, there is currently no information available

Declarations Sorry, there is currently no information available

Approvals Sorry, there is currently no information available

Downloads / CAD

Documentation Sorry, there is currently no information available

Characteristic curves Sorry, there is currently no information available

Videos Sorry, there is currently no information available

Data sheets Sorry, there is currently no information available

CAD-Drawing Sorry, there is currently no information available

Treiber/Software Sorry, there is currently no information available

Rittal – The System.

Faster – better – worldwide.

- Enclosures
- Power distribution
- Climate control
- IT Infrastructure
- Software & services

Rittal GmbH & Co. KG
Postbox 1662 · D-35726 Herborn
Phone +49(0)2772 505-0 · Fax +49(0)2772 505-2319
E-Mail: info@rittal.com · www.rittal.com

ENCLOSURES

POWER DISTRIBUTION

CLIMATE CONTROL

IT INFRASTRUCTURE

SOFTWARE & SERVICES

FRIEDHELM LOH GROUP

