

Rittal – The System.

Faster – better – everywhere.

Gland plates for TS IT – TS 5001.224

Date : Mar 31, 2014

ENCLOSURES

POWER DISTRIBUTION

CLIMATE CONTROL

IT INFRASTRUCTURE

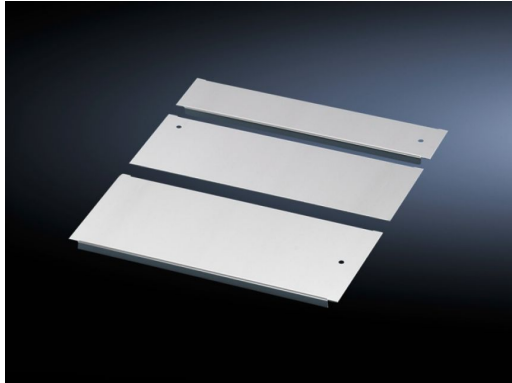
SOFTWARE & SERVICES

FRIEDHELM LOH GROUP



Gland plates for TS IT – TS 5001.224

created : 31.03.2014 on www.rittal.com/com-en



Product description

Description:

- Potential equalisation is provided via assembly components and earthing points.

Material:

- Sheet steel

Surface finish:

- zinc-plated

Supply includes:

- Assembly parts

Note:

- For greater stability and universal cable entry, the base opening is divided in the width for 1000, 1200 and 1600 mm wide enclosures, and is suitable for various configurations.

Packs of:

- 1 pc(s).

EAN:

- 779

Customs tariff number:

- 73269098

Product features

To fit:

- Enclosure type: TS-IT
- TS
- Width: 1000 mm

Dimensions:

- Depth: 250 mm

Downloads

CAD drawings:

- Request
-