

Rittal – The System.

Faster – better – everywhere.

Gland plate for CM, TP – CM 5001.236

Date : Feb 10, 2021

ENCLOSURES

POWER DISTRIBUTION

CLIMATE CONTROL

IT INFRASTRUCTURE

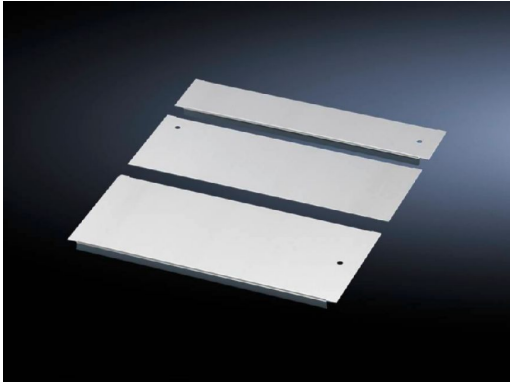
SOFTWARE & SERVICES

FRIEDHELM LOH GROUP



Gland plate for CM, TP – CM 5001.236

created: 10.02.2021 build on www.rittal.com/uk-en



Discontinued article.

This item will be discontinued on: 31.01.2021

Product description

Description:	Potential equalisation is provided via assembly components and earthing points.
Material:	Sheet steel
Surface finish:	Zinc-plated
Supply includes:	Assembly parts
Note:	For greater stability and universal cable entry, the base opening is divided in the width for 1000, 1200 and 1600 mm wide enclosures, and is suitable for various configurations. Several gland module plates need to be combined to close off the base completely in the TS-IT

Product description

To fit:	Enclosure type: TS IT Enclosure type: TS Enclosure type: CM Enclosure type: TP Width: = 1600 mm
Dimensions:	Depth: 250 mm
Packs of:	1 pc(s).
Weight/pack:	2.72 kg

Copper weight (kg per piece):	0
EAN:	4028177556812
Customs tariff number:	94039010
ETIM 7.0:	EC002620
ETIM 6.0:	EC002620
eCl@ss 8.0/8.1:	27189261
eCl@ss 6.0/6.1:	27189261
Product description:	CM Gland plate, for CM, TP, D: 250 mm, for W: 1600 mm
Approvals	
Certificates:	EAC