

Rittal – The System.

Faster – better – everywhere.

▶ **Drawer for keyboard and mouse with mousepad support – CP 6003.000**

Date : Apr 5, 2018

ENCLOSURES

POWER DISTRIBUTION

CLIMATE CONTROL

IT INFRASTRUCTURE

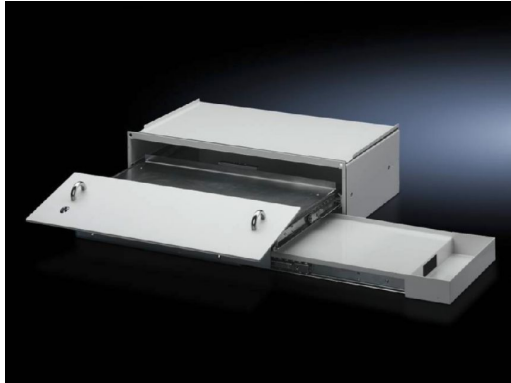
SOFTWARE & SERVICES

FRIEDHELM LOH GROUP



Drawer for keyboard and mouse with mousepad support – CP 6003.000

created: 05.04.2018 on www.rittal.com/com-en



Product description

Design:	Drawer and housing: With side pull-out mousepad support and tray
Description:	May be installed in any sufficiently large surface (e.g. door, side panel) and front panels. Suitable to accommodate keyboards, standard mouse or pad.
Material:	Drawer and enclosure: Sheet steel Front panel: Aluminium
Surface finish:	Drawer and enclosure: Textured paint Front panel: Natural anodised
Protection category IP to IEC 60 529:	IP 54
Supply includes:	Assembly parts
Note:	Not suitable for installation in a 482.6 mm (19") frame

Product features

Dimensions:	Width: 482.6 mm Depth: 261 mm
Keyboard dimensions:	Width (max.): 460 mm Height (max.): 42 mm Depth (max.): 170 mm
Units:	3.5 U

Packs of:	1 pc(s).
Weight/pack:	10.7 kg
EAN:	4028177185272
Customs tariff number:	94039010
ETIM 6.0:	EC002620
ETIM 5.0:	EC002620
eCl@ss 8.0/8.1:	27189261
eCl@ss 7.0/7.1:	27189261
eCl@ss 6.0/6.1:	27189261
eCl@ss 5.1/5.1.4:	27189219
Product description (long):	CP Drawer for keyboard and mouse, with mousepad support, 19"/3.5 U