

# Rittal – The System.

Faster – better – everywhere.

## ▶ Cable gland module CP-L, Ø 130 mm – CP 6052.500

Date : Mar 31, 2014

ENCLOSURES

POWER DISTRIBUTION

CLIMATE CONTROL

IT INFRASTRUCTURE

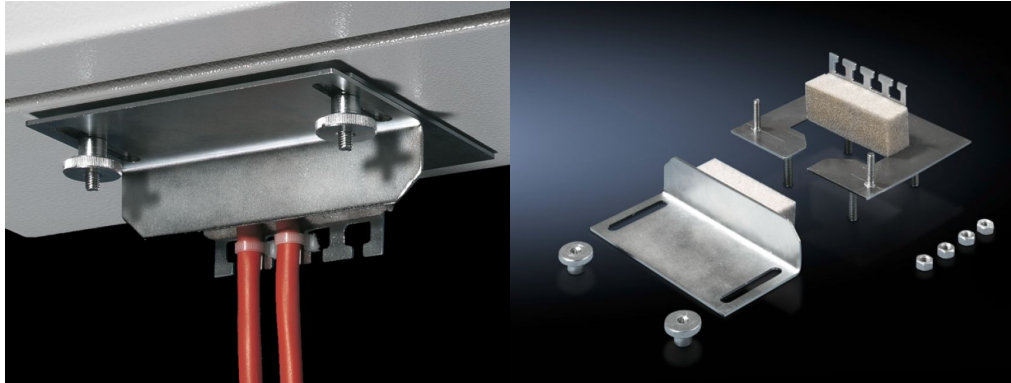
SOFTWARE & SERVICES

FRIEDHELM LOH GROUP



# Cable gland module CP-L, Ø 130 mm – CP 6052.500

created : 31.03.2014 on [www.rittal.com/com-en](http://www.rittal.com/com-en)



## Product description

### Description:

- Use of the support arm cutout CP-L, round, with enclosures mounted on the wall, for sealed cable entry. May also be mounted retrospectively with the cables already inserted. Fitted with T-heads for cable clamping. Particularly well-suited to cables with identical cross-sections.

### Material:

- Sheet steel

### Surface finish:

- zinc-plated

### Supply includes:

- Assembly parts

### Packs of:

- 1 pc(s).

### EAN:

- 34961

### Customs tariff number:

- 73269098