

Rittal – The System.

Faster – better – everywhere.

Mounting bracket for interior installation – CP 6205.100

Date : Feb 3, 2022

ENCLOSURES

POWER DISTRIBUTION

CLIMATE CONTROL

IT INFRASTRUCTURE

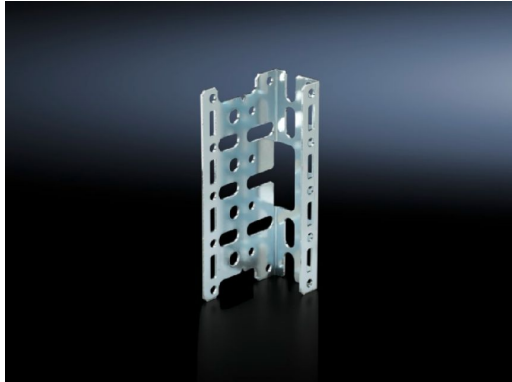
SOFTWARE & SERVICES

FRIEDHELM LOH GROUP



Mounting bracket for interior installation – CP 6205.100

created: 03.02.2022 build on www.rittal.com/uk-en



Product description

Description: For installing punched sections with mounting flanges and support strips, horizontally and vertically. Comfort Panel from an installation depth of 74 mm or Optipanel from an installation depth of 100 mm. In conjunction with the rail for interior installation, the mounting bracket allows the LED system light to be fitted without machining and without the use of tools.

Material: Sheet steel

Surface finish: Zinc-plated

Assembly instruction: For installation in AX sheet steel, only in conjunction with rail for interior installation AX

Supply includes: Assembly parts

Product description

Installation options: Comfort Panel from an installation depth of 74 mm
Optipanel from an installation depth of 100 mm
Rail for interior installation AX

Packs of: 4 pc(s).

Weight/pack: 0.38 kg

Copper weight (kg per piece): 0

EAN: 4028177536197

Customs tariff 83024900

number:	
ETIM 7.0:	EC002620
ETIM 6.0:	EC002620
eCl@ss 8.0/8.1:	27189261
eCl@ss 6.0/6.1:	23159101
Product description:	CP Mounting bracket, for interior installation, for Comfort Panel and Optipanel