

Rittal – The System.

Faster – better – everywhere.

► Support section CP 120 Open – CP 6212.110

Date : Mar 10, 2016

ENCLOSURES

POWER DISTRIBUTION

CLIMATE CONTROL

IT INFRASTRUCTURE

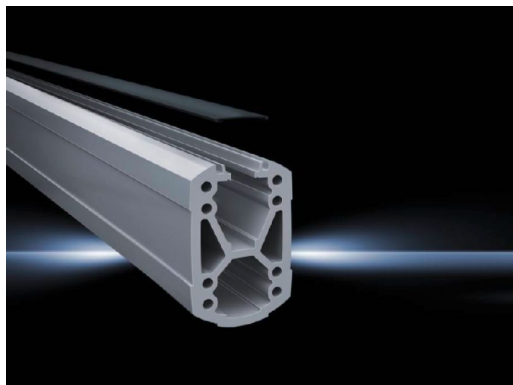
SOFTWARE & SERVICES

FRIEDHELM LOH GROUP



Support section CP 120 Open – CP 6212.110

created : 10.03.2016 on www.rittal.com/com-en



Product description

Description:	Attachment to the connection components with 4 self-tapping screws in the screw channel. May be cut to any required length, no thread-tapping required. Open cable duct for easy servicing access and for pre-assembled cables with connectors; lockable via cover section. X-shaped profiling for greater load capacity, large cable routing channels. Upper channel adequate for cables with large connectors (e.g. DVI or VGA) and available/usable throughout the entire system.
Material:	Support section: Extruded aluminium section Cover: Plastic
Colour:	Support section: RAL 7035 Cover: RAL 7024
Supply includes:	Support section Clip-in lid
Packs of:	1 pc(s).
EAN:	4028177683976
Customs tariff number:	76042100
eCl@ss 5.1:	27189248
eCl@ss 7.0:	27189261
ETIM 6.0:	EC000882

Product features

Dimensions: Width: 75 mm
Height: 120 mm



Length: 1000 mm

Weight/pack: 9.2 kg

Approvals

Declarations:  [Manufacturer's declaration \(DE\)](#)

Downloads

Data sheets:  [Technical details](#)
EN
 [Technical system catalogue](#)
EN

Documentation:  [Instructions \(EN, DE\)](#)

CAD drawings: Request