

# Rittal – The System.

Faster – better – everywhere.

## ► Enclosure reinforcement – CP 6503.000

Date : Mar 31, 2014

ENCLOSURES

POWER DISTRIBUTION

CLIMATE CONTROL

IT INFRASTRUCTURE

SOFTWARE & SERVICES

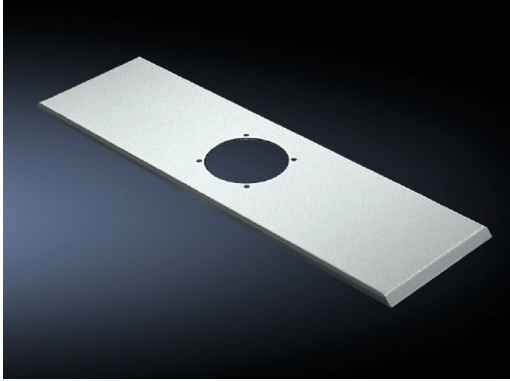
FRIEDHELM LOH GROUP



# Enclosure reinforcement – CP 6503.000

created : 31.03.2014 on [www.rittal.com/com-en](http://www.rittal.com/com-en)

## Discontinued product



### Product description

**Description:**

- For external or internal reinforcement of enclosures of a corresponding size. Smaller enclosures may also be mounted directly without reinforcement.

**Material:**

- Sheet steel

**Supply includes:**

- Assembly parts for the enclosure and support section plus 2 seals.

**Packs of:**

- 1 pc(s).

**EAN:**

- 11540

**Customs tariff number:**

- 73269098

### Product features

**To fit:**

- Enclosure type: AE
- Width: 600 mm
- Depth: 210 mm


**Weight:**

- 2.2 kg

## Downloads

---

### Data sheets:

-  [Technical details \(EN\)](#)
-