

Rittal – The System.

Faster – better – everywhere.

► Cover plate for support arm connection – CP 6505.200

Date : Oct 29, 2018

ENCLOSURES

POWER DISTRIBUTION

CLIMATE CONTROL

IT INFRASTRUCTURE

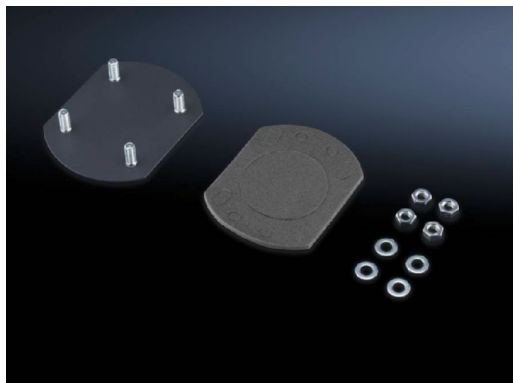
SOFTWARE & SERVICES

FRIEDHELM LOH GROUP



Cover plate for support arm connection – CP 6505.200

created: 29.10.2018 on www.rittal.com/com-en



Product description

Description:	For secure sealing of an unrequired support arm connection in the enclosure
Material:	Sheet steel
Surface finish:	Spray-finished
Colour:	RAL 7024
Supply includes:	Seal and assembly parts
Note:	If there are already 2 support arm cut-outs provided with the Comfort Panel, Optipanel and Compact Panel command panels, a cover plate is included with the supply of the enclosure.

Product features

Packs of:	1 pc(s).
Weight/pack:	0.12 kg
EAN:	4028177389823
Customs tariff number:	94039010
ETIM 6.0:	EC000456
ETIM 5.0:	EC000456

eCl@ss 8.0/8.1:	27189263
eCl@ss 7.0/7.1:	27189217
eCl@ss 6.0/6.1:	27189217
eCl@ss 5.1/5.1.4:	27189217
Product description (long):	CP Cover plate, for support arm connection 90x71 mm