

Rittal – The System.

Faster – better – everywhere.

► **Base/plinth
components, front
and rear, 100 mm
Sheet steel, for TS, TS
IT, SE, CM, TP, PC,
IW, TE – TS 7825.601**

Date : Mar 1, 2018

ENCLOSURES

POWER DISTRIBUTION

CLIMATE CONTROL

IT INFRASTRUCTURE

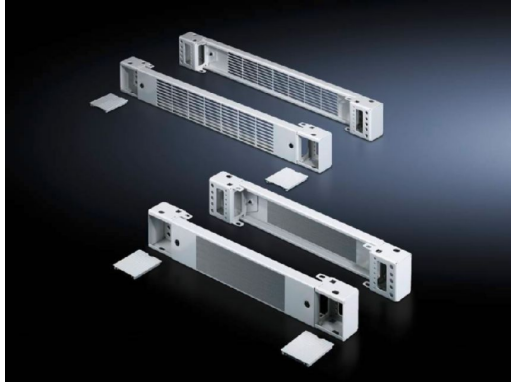
SOFTWARE & SERVICES

FRIEDHELM LOH GROUP



Base/plinth components, front and rear, 100 mm Sheet steel, for TS, TS IT, SE, CM, TP, PC, IW, TE – TS 7825.601

created: 01.03.2018 build on www.rittal.com/il-en



Product description

Design:	Vented
Description:	Base/plinth component consisting of one trim panel and two pre-configured corner pieces.
Material:	Base/plinth components: Sheet steel Cover caps: Plastic
Surface finish:	Spray-finished
Colour:	RAL 7035 Cover caps: RAL 7035
Supply includes:	2 base/plinth components 4 cover caps Assembly parts

Product features

To fit:	Enclosure type: TS Enclosure type: SE Enclosure type: CM Enclosure type: TP Enclosure type: PC Enclosure type: IW Enclosure type: TS IT Width: = 600 mm
----------------	--

Dimensions:	Height: 100 mm
Packs of:	2 pc(s).
Weight/pack:	3.8 kg
EAN:	4028177234338
Customs tariff number:	94039010
ETIM 6.0:	EC000721
ETIM 5.0:	EC000721
eCl@ss 8.0/8.1:	27182003
eCl@ss 7.0/7.1:	27182003
eCl@ss 6.0/6.1:	27182003
eCl@ss 5.1/5.1.4:	27182092

Approvals

Certificates:	EAC
----------------------	-----