

Rittal – The System.

Faster – better – everywhere.

► Base/plinth trim panels, side, 100 mm for base/plinth components front and rear – TS 8601.040

Date : Apr 22, 2016

ENCLOSURES

POWER DISTRIBUTION

CLIMATE CONTROL

IT INFRASTRUCTURE

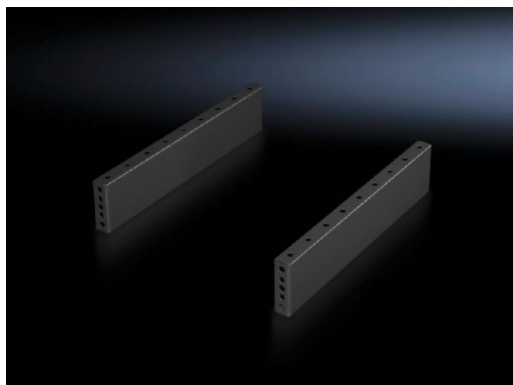
SOFTWARE & SERVICES

FRIEDHELM LOH GROUP



Base/plinth trim panels, side, 100 mm for base/plinth components front and rear – TS 8601.040

created : 22.04.2016 on www.rittal.com/com-en



Product description

Description:	For mounting between the base/plinth components. At 200 mm height, two 100 mm base/plinth trim panels may be used.
Material:	Sheet steel
Surface finish:	Spray-finished
Colour:	RAL 7022
Assembly instruction:	Base/plinth trim panels, side, 100 mm, may be installed rotated through 90° to stabilise bayed base/plinth components. The base/plinth baying bracket is required for this purpose
Supply includes:	2 base/plinth trim panels Assembly parts
Packs of:	2 pc(s).
EAN:	4028177208636
Customs tariff number:	94039010
eCl@ss 5.1:	27182092
eCl@ss 7.0:	27189270
ETIM 6.0:	EC000721

Product features

To fit: Enclosure type: TS
Enclosure type: SE
Enclosure type: CM
Enclosure type: TP
Enclosure type: PC
Enclosure type: IW
Enclosure type: TS IT
Depth: = 400 mm

Dimensions: Height: 100 mm

Weight/pack: 1.22 kg

Downloads

Data sheets:  [Technical details](#)
EN

Documentation:  [Instructions \(EN, DE\)](#)

CAD drawings: Request