

# Rittal – The System.

Faster – better – everywhere.

► **Cross member for VX,  
TS, SE, CM, TP, PC,  
IW, Blue e+ chillers –  
TS 8601.450**

Date : Feb 4, 2021

ENCLOSURES

POWER DISTRIBUTION

CLIMATE CONTROL

IT INFRASTRUCTURE

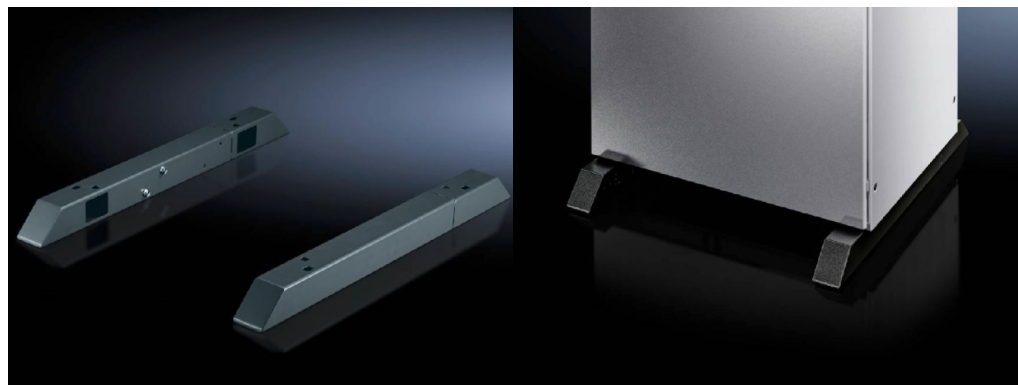
SOFTWARE & SERVICES

FRIEDHELM LOH GROUP



# Cross member for VX, TS, SE, CM, TP, PC, IW, Blue e+ chillers – TS 8601.450

created: 04.02.2021 on [www.rittal.com/com-en](http://www.rittal.com/com-en)



## Product description

**Description:** To increase stability, the cross member is positioned below the base frame of the enclosure and protrudes 138 mm at the front and rear. For deeper enclosures, the rear part may be extended and screw-fastened again. For screw-fastening to the floor and enclosure with mounting hole at the sides, front and rear. The castors and levelling feet may be secured to the welded nuts M12.

**Benefits:** To increase stability  
Adjustable to the enclosure depth

**Material:** Sheet steel

**Surface finish:** Spray-finished

**Colour:** RAL 7015

**Supply includes:** 1 cross member, left  
1 cross member, right

**Note:** Ensure sufficient stability to prevent the enclosure from tipping over!

## Product description

**To fit:** Enclosure type: VX  
Enclosure type: TS  
Enclosure type: SE  
Enclosure type: CM  
Enclosure type: TP  
Enclosure type: PC  
Enclosure type: IW  
Depth: = 400 mm

Depth: = 500 mm

|                                      |   |
|--------------------------------------|---|
| <b>Dimensions:</b>                   | Height: 70 mm   |
| <b>Installation options:</b>         | For screw-fastening to the floor and enclosure with mounting hole at the sides, front and rear<br>For Blue e+ chillers, the cross member can be used as base/plinth component |
| <b>Packs of:</b>                     | 2 pc(s).  |
| <b>Weight/pack:</b>                  | 7.9 kg  |
| <b>Copper weight (kg per piece):</b> | 0   |
| <b>EAN:</b>                          | 4028177382633   |
| <b>Customs tariff number:</b>        | 94039010  |
| <b>ETIM 7.0:</b>                     | EC000721  |
| <b>ETIM 6.0:</b>                     | EC000721  |
| <b>eCl@ss 8.0/8.1:</b>               | 27182003  |
| <b>eCl@ss 6.0/6.1:</b>               | 27182003  |
| <b>Product description:</b>          | TS Cross member, for TS, SE, CM, TP, PC, IW, for D: 400/500 mm  |
| <b>Approvals</b>                     |   |
| <b>Certificates:</b>                 | EAC   |