

# Data sheet

## TS 8602.200



### Main data:

<b>Model No.:</b>	TS 8602.200
<b>Designation:</b>	Base/plinth components f+r, RAL 7022, WxH 1200 x 200 mm,
<b>Variant:</b>	n/a
<b>Packs of:</b>	1 SA
<b>W x H x D:</b>	1.200 mm x 200 mm x 0 mm
<b>Mounting surface:</b>	n/a
<b>Volume:</b>	16,83 dm <sup>3</sup>
<b>Net weight:</b>	6,96 kg
<b>EAN:</b>	4028177208599
<b>Customs number:</b>	94039010
<b>Protection categories:</b>	n/a

### Approbationen:

<b>CE</b>	4 346 707
<b>HE</b>	4 601 201

### Article features:

#### Technical specifications

Base/plinth components consisting of one trim panel and two pre-configured corner pieces. In 200 mm high base/plinth components, one

trim panel is divided into two for cable entry.

Product notes

Design: solid

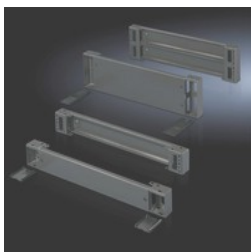
Dimensions: Height: 200 mm

Suitable for: Enclosure width 1200 mm

TS 8, CM, TP, PC, IW, TE 7000

# Data sheet

## TS 8602.200



Surface finish  
Spray-finished  
Colour  
RAL 7022  
Cover caps: RAL 9005/7035

### **Material**

Base/plinth components: Sheet steel  
Cover caps: Plastic  
Supply includes  
1 set = 2 base/plinth components, 4 cover caps, 4 screws  
and

captive nuts M12 for mounting on the enclosure.  
Packing unit: 1 set