

Rittal – The System.

Faster – better – everywhere.

Module plates Solid – TS 8609.160

Date : Jun 8, 2018

ENCLOSURES

POWER DISTRIBUTION

CLIMATE CONTROL

IT INFRASTRUCTURE

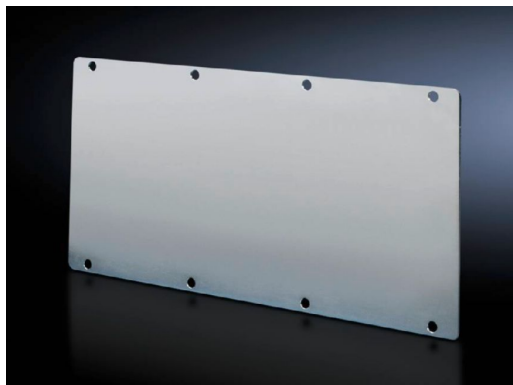
SOFTWARE & SERVICES

FRIEDHELM LOH GROUP



Module plates Solid – TS 8609.160

created: 08.06.2018 on www.rittal.com/com-en



Product description

Design:	Solid
Description:	For sealing unused cut-outs. Easily machined for individual cut-outs.
Material:	Sheet steel, 2.0 mm
Surface finish:	Zinc-plated
Supply includes:	Seal included

Product features

Packs of:	1 pc(s).
Weight/pack:	0.98 kg
EAN:	4028177211780
Customs tariff number:	94039010
ETIM 6.0:	EC000211
ETIM 5.0:	EC002309
eCl@ss 8.0/8.1:	27142421

eCl@ss 7.0/7.1:	27182102
-----------------	----------

eCl@ss 6.0/6.1:	27182102
-----------------	----------

eCl@ss 5.1/5.1.4:	27182102
-------------------	----------

Product description (long):	TS Module panel, closed
------------------------------------	-------------------------

Approvals	
------------------	--

Certificates:	EAC
----------------------	-----
