

# Rittal – The System.

Faster – better – everywhere.

## Partial mounting plates for VX – VX 8617.520

Date : Oct 9, 2019

ENCLOSURES

POWER DISTRIBUTION

CLIMATE CONTROL

IT INFRASTRUCTURE

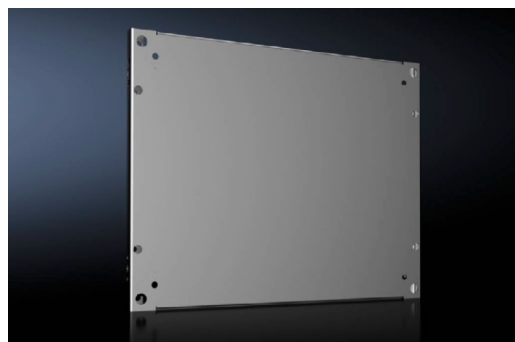
SOFTWARE & SERVICES

FRIEDHELM LOH GROUP



# Partial mounting plates for VX – VX 8617.520

created: 09.10.2019 build on [www.rittal.com/uk-en](http://www.rittal.com/uk-en)



## Product description

<b>Description:</b>	To accommodate additional components inside the enclosure. Partial mounting plates can be used extremely flexibly, providing a platform for a diverse range of applications.
<b>Material:</b>	Sheet steel, 2.5 mm
<b>Surface finish:</b>	Zinc-plated
<b>Supply includes:</b>	Assembly parts

## Product features

<b>To fit:</b>	Enclosure type: VX Width: = 600 mm Depth: = 500 mm Depth: = 600 mm
<b>Dimensions:</b>	Width: 500 mm Depth: 400 mm
<b>Installation options:</b>	For optional installation either upright as a vertical mounting surface, or flat as a horizontal base. Attach directly onto the enclosure section With a set forward configuration, attachment is via punched sections with mounting flanges at any mounting level in the enclosure For multi-level installation one behind the other, partial mounting plates may be vertically hinged, via hinge attachment, to allow rapid access to the levels behind.
<b>To fit door width:</b>	600 mm
<b>Packs of:</b>	1 pc(s).

<b>Weight/pack:</b>	5.66 kg
<b>Copper weight (kg per piece):</b>	0
<b>EAN:</b>	4028177919372
<b>Customs tariff number:</b>	94032080
<b>ETIM 6.0:</b>	EC000213
<b>ETIM 5.0:</b>	EC000213
<b>eCl@ss 8.0/8.1:</b>	27409216
<b>eCl@ss 7.0/7.1:</b>	27409216
<b>eCl@ss 6.0/6.1:</b>	27409216
<b>eCl@ss 5.1/5.1.4:</b>	27189231
<b>Product description:</b>	VX Partial mounting plate, dimensions: 500x400 mm