

Rittal – The System.

Faster – better – everywhere.

Partial mounting plates for VX – VX 8617.530

Date : Sep 16, 2019

ENCLOSURES

POWER DISTRIBUTION

CLIMATE CONTROL

IT INFRASTRUCTURE

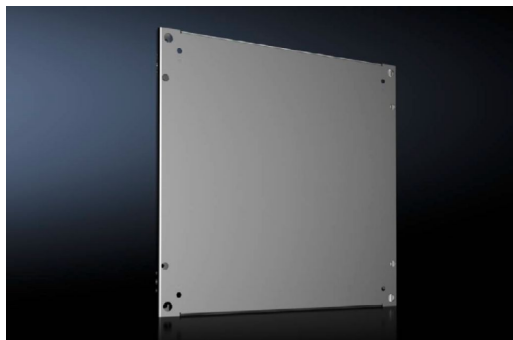
SOFTWARE & SERVICES

FRIEDHELM LOH GROUP



Partial mounting plates for VX – VX 8617.530

created: 16.09.2019 on www.rittal.com/com-en



Product description

Description:	To accommodate additional components inside the enclosure. Partial mounting plates can be used extremely flexibly, providing a platform for a diverse range of applications.
Material:	Sheet steel, 2.5 mm
Surface finish:	Zinc-plated
Supply includes:	Assembly parts

Product features

To fit:	Enclosure type: VX Width: = 600 mm Depth: = 600 mm
Dimensions:	Width: 500 mm Depth: 500 mm
Installation options:	For optional installation either upright as a vertical mounting surface, or flat as a horizontal base. Attach directly onto the enclosure section With a set forward configuration, attachment is via punched sections with mounting flanges at any mounting level in the enclosure For multi-level installation one behind the other, partial mounting plates may be vertically hinged, via hinge attachment, to allow rapid access to the levels behind.
To fit door width:	600 mm
Packs of:	1 pc(s).

Weight/pack:	6.38 kg
Copper weight (kg per piece):	0
EAN:	4028177919389
Customs tariff number:	94032080
ETIM 6.0:	EC000213
ETIM 5.0:	EC000213
eCl@ss 8.0/8.1:	27409216
eCl@ss 7.0/7.1:	27409216
eCl@ss 6.0/6.1:	27409216
eCl@ss 5.1/5.1.4:	27189231
Product description:	VX Partial mounting plate, dimensions: 500x500 mm