

Rittal – The System.

Faster – better – everywhere.

Lock insert – VX 8618.306

Date : Nov 6, 2018

ENCLOSURES

POWER DISTRIBUTION

CLIMATE CONTROL

IT INFRASTRUCTURE

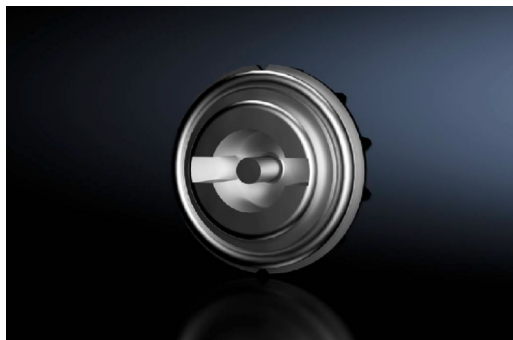
SOFTWARE & SERVICES

FRIEDHELM LOH GROUP



Lock insert – VX 8618.306

created: 06.11.2018 on www.rittal.com/com-en



Product description

Design: G

Material: Die-cast zinc

Product features

Installation options: Comfort handle for lock inserts

Lock insert: 3 mm double-bit

Packs of: 1 pc(s).

EAN: 4028177921870

Customs tariff number: 83016000

ETIM 6.0: EC000743

ETIM 5.0: EC000743

eCl@ss 8.0/8.1: 27409218

eCl@ss 7.0/7.1: 27409218

eCl@ss 6.0/6.1: 27409218

eCl@ss 5.1/5.1.4: 27189256

**Product description
(long):**

VXLock insert, type G, die-cast zinc, 3 mm double-bit
