

Rittal – The System.

Faster – better – everywhere.

▶ Section for cable entry, rear for VX – VX 8618.811

Date : Nov 7, 2018

ENCLOSURES

POWER DISTRIBUTION

CLIMATE CONTROL

IT INFRASTRUCTURE

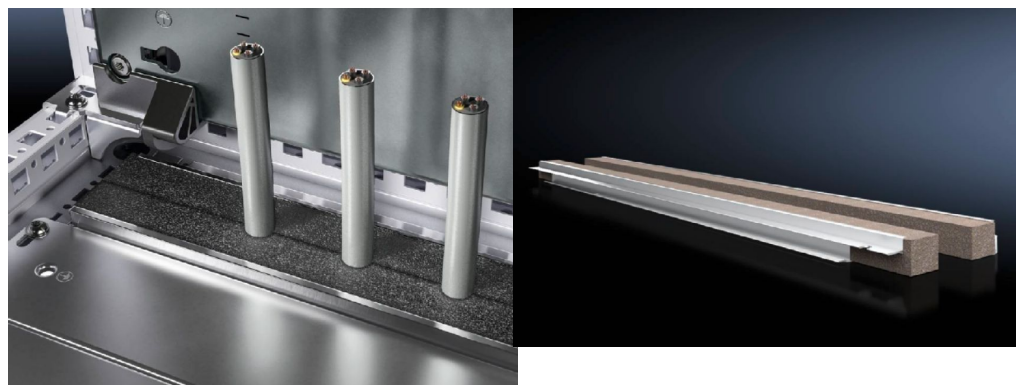
SOFTWARE & SERVICES

FRIEDHELM LOH GROUP



Section for cable entry, rear for VX – VX 8618.811

created: 07.11.2018 on www.rittal.com/com-en



Product description

Benefits:	Simple assembly Full-surface support High level of sealing of cables inserted into the enclosure
Applications:	For top-mounting on gland plates.
Material:	Extruded aluminium section Seal: PU foam Cross-section: 30 x 25 mm
Protection category IP to IEC 60 529:	IP 55 subject to correct mounting
Supply includes:	Plug-in sections, incl. foam rubber clamp strip
Note:	You will need two pieces per cable entry point. From an enclosure width of 1000 mm, the base assembly is divided into two sections in the width. Two cable entry points (left/right) may be used.

Product features

To fit:	Width: = 800 mm
Packs of:	2 pc(s).
Weight/pack:	0.31 kg
EAN:	4028177922808
Customs tariff	76042990

number:	
ETIM 6.0:	EC002624
ETIM 5.0:	EC002624
eCl@ss 8.0/8.1:	27189265
eCl@ss 7.0/7.1:	27400604
eCl@ss 6.0/6.1:	27400604
eCl@ss 5.1/5.1.4:	27189222
Product description (long):	VX Section for cable entry, rear, for W: 800 mm