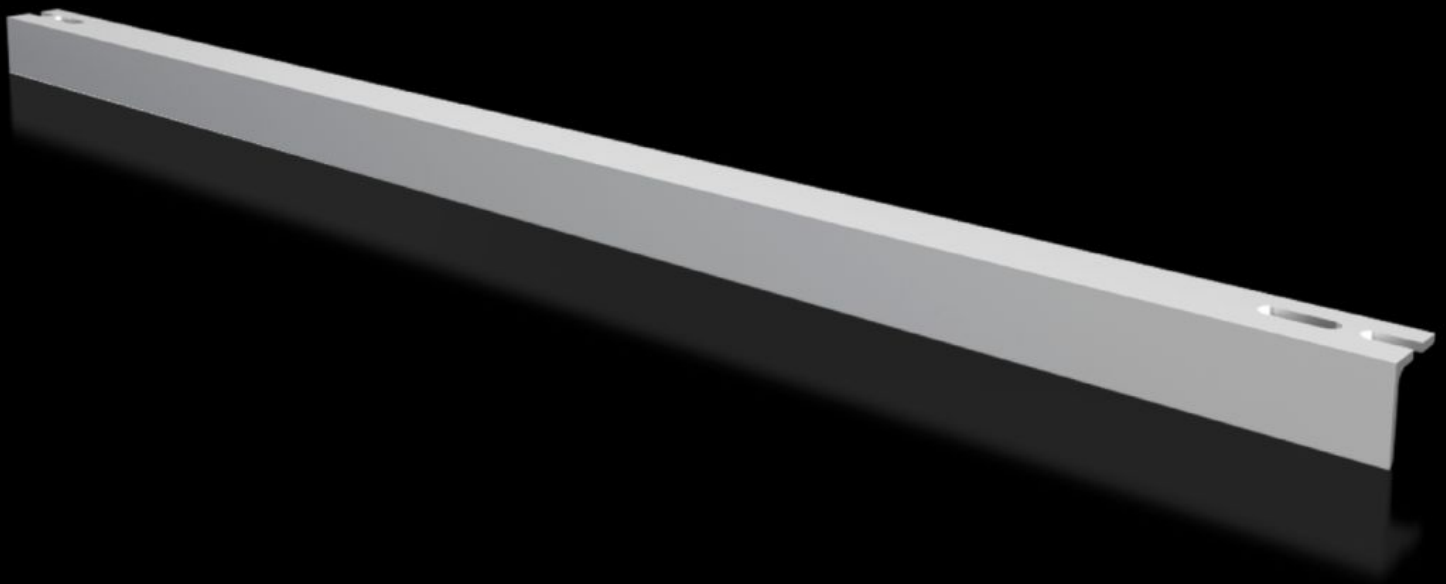


Rittal – The System.

Faster – better – everywhere.



VX 8619.430 Cable clamp rail

State: 21/11/2022 (Source: rittal.com/com-en)

ENCLOSURES

POWER DISTRIBUTION

CLIMATE CONTROL

IT INFRASTRUCTURE

SOFTWARE & SERVICES

FRIEDHELM LOH GROUP



VX 8619.430 - Cable clamp rail Right-angle section for VX, TS, VX SE, PC, base/plinth system VX

For strain relief with cable entry. Depth-variable mounting on a 25 mm pitch pattern on the horizontal enclosure section or in the base/plinth.

Features

| | |
|------------------------------|---|
| Model No. | VX 8619.430 |
| Product description | For strain relief with cable entry. Depth-variable mounting on a 25 mm pitch pattern on the horizontal enclosure section or in the base/plinth. |
| Material | Steel |
| Surface finish | Zinc-plated |
| Supply includes | Assembly parts |
| VX installation options | In enclosure width 1000 mm, in the base |
| VX SE installation options | In enclosure width 1000 mm, in the base |
| AX installation options | In enclosure width 1000 mm, in conjunction with rail for interior installation AX and base configuration rail for AX |
| Dimensions | Length: 954 mm |
| To fit | Enclosure type: VX VX SE AX Width: = 1,000 mm |
| Packs of | 2 pc(s). |
| Weight/pack | 5.25 kg |
| Copper weight (kg per piece) | 0 |
| Customs tariff number | 73269098 |
| EAN | 4028177921955 |
| ETIM 7.0 | EC000322 |
| ECLASS 8.0 | 27400604 |

Approvals

Approvals

GOST