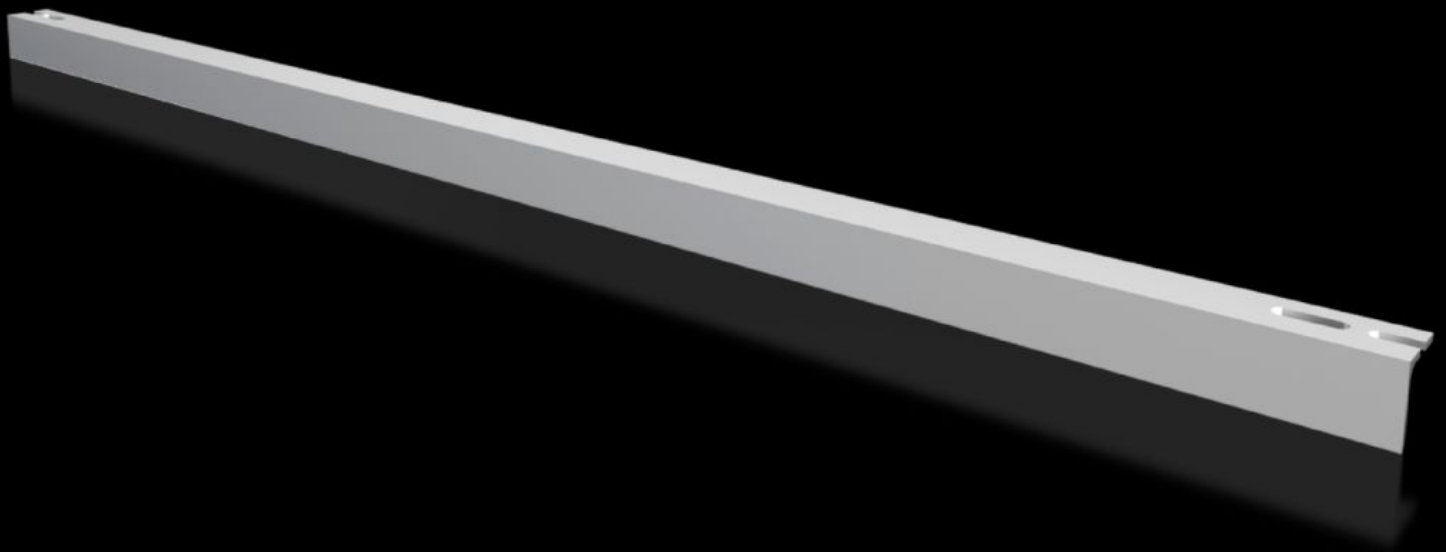


Rittal – The System.

Faster – better – everywhere.



VX 8619.440 Cable clamp rail

State: 31/07/2023 (Source: rittal.com/com-en)

ENCLOSURES

POWER DISTRIBUTION

CLIMATE CONTROL

IT INFRASTRUCTURE

SOFTWARE & SERVICES

FRIEDHELM LOH GROUP



VX 8619.440 - Cable clamp rail Right-angle section for VX, TS, VX SE, PC, base/plinth system VX

For strain relief with cable entry. Depth-variable mounting on a 25 mm pitch pattern on the horizontal enclosure section or in the base/plinth.

Features

Model No.	VX 8619.440
Product description	For strain relief with cable entry. Depth-variable mounting on a 25 mm pitch pattern on the horizontal enclosure section or in the base/plinth.
Material	Steel
Surface finish	Zinc-plated
Supply includes	Assembly parts
VX installation options	In enclosure width 1200 mm, in the base
VX SE installation options	In enclosure width 1200 mm, in the base
AX installation options	In enclosure width 1200 mm, in conjunction with rail for interior installation AX and base configuration rail for AX
Dimensions	Length: 1,154 mm
To fit	Enclosure type: VX VX SE AX Width: = 1,200 mm
Packs of	2 pc(s).
Weight/pack	6 kg
Customs tariff number	73269098
EAN	4028177921962
ETIM 7.0	EC000322
ECLASS 8.0	27400604

Approvals

Approvals

GOST