

Rittal – The System.

Faster – better – everywhere.

► **Punched section with
mounting flange, 14 x
39 mm for tubular
door frame – VX
8619.700**

Date : Nov 6, 2018

ENCLOSURES

POWER DISTRIBUTION

CLIMATE CONTROL

IT INFRASTRUCTURE

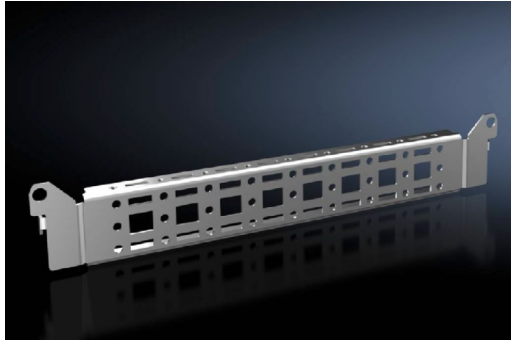
SOFTWARE & SERVICES

FRIEDHELM LOH GROUP



Punched section with mounting flange, 14 x 39 mm for tubular door frame VX, TS, SE – VX 8619.700

created: 06.11.2018 on www.rittal.com/com-en



Product description

Description:	Simple location and fast mounting on the tubular door frame.
Applications:	For attachment of Cable ducts Cable conduit holder Equipment installed on the door
Material:	Sheet steel
Surface finish:	Zinc-plated
Supply includes:	Assembly parts
Note:	For installing your own components on the punched section with mounting flange, metal screws or self-tapping M5 screws are required

Product features

To fit door width:	400 mm
Packs of:	4 pc(s).
Weight/pack:	0.68 kg
EAN:	4028177924659
Customs tariff	73269098

number:	
ETIM 6.0:	EC002625
ETIM 5.0:	EC002625
eCl@ss 8.0/8.1:	27189234
eCl@ss 7.0/7.1:	27189234
eCl@ss 6.0/6.1:	23159101
eCl@ss 5.1/5.1.4:	27189250
Product description (long):	VX Punched section, with mounting flange 14 x 39 mm, for door width: 400 mm