

Rittal – The System.

Faster – better – everywhere.

► **Base/plinth corner piece with base/plinth trim panels, front and rear, 100 mm for VX, TS, TS IT, SE, PC, IW, TP, CM – VX 8620.001**

Date : May 7, 2018

ENCLOSURES

POWER DISTRIBUTION

CLIMATE CONTROL

IT INFRASTRUCTURE

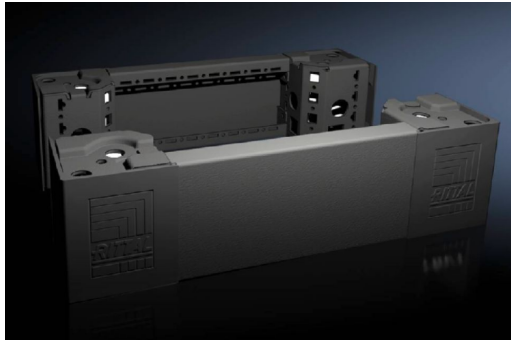
SOFTWARE & SERVICES

FRIEDHELM LOH GROUP



Base/plinth corner piece with base/plinth trim panels, front and rear, 100 mm for VX, TS, TS IT, SE, PC, IW, TP, CM – VX 8620.001

created: 07.05.2018 on www.rittal.com/com-en



Product description

Description: High-load capacity base/plinth corner pieces with moulded self-positioning to the baying enclosure system VX25, may be used with or without trim panels depending on the application. Large openings in the corner piece for optimum access to the screw-fastening point, may be concealed with a plastic corner and baying cover.

Material: Base/plinth corner piece: Sheet steel
Base/plinth trim panel front/rear: Sheet steel
Corner and baying cover: Plastic

Colour: RAL 9005

Supply includes: 4 base/plinth corner pieces, 100 mm high
4 corner covers
1 baying cover
2 base/plinth trim panels, front/rear, 100 mm high
Assembly parts

Product features

To fit: Enclosure type: VX
Width: = 400 mm

Dimensions: Height: 100 mm

Packs of: 2 pc(s).

EAN: 4028177922006

Customs tariff number:	94032080
ETIM 6.0:	EC000721
ETIM 5.0:	EC000721
eCl@ss 8.0/8.1:	27182003
eCl@ss 7.0/7.1:	27182003
eCl@ss 6.0/6.1:	27182003
eCl@ss 5.1/5.1.4:	27182092
Product description (long):	VX Base/plinth corner piece, with base/plinth trim panel, front and rear, H: 100 mm, for W: 400 mm, sheet steel