

# Rittal – The System.

Faster – better – everywhere.

► **Base/plinth corner piece with base/plinth trim panels, front and rear, 100 mm for VX, TS, TS IT, SE, PC, IW, TP, CM – VX 8620.009**

Date : May 16, 2018

ENCLOSURES

POWER DISTRIBUTION

CLIMATE CONTROL

IT INFRASTRUCTURE

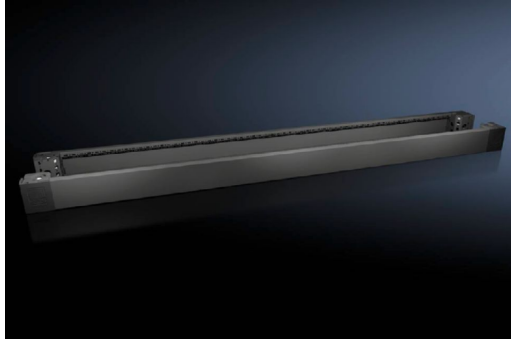
SOFTWARE & SERVICES

FRIEDHELM LOH GROUP



# Base/plinth corner piece with base/plinth trim panels, front and rear, 100 mm for VX, TS, TS IT, SE, PC, IW, TP, CM – VX 8620.009

created: 16.05.2018 on [www.rittal.com/com-en](http://www.rittal.com/com-en)



## Product description

**Description:** High-load capacity base/plinth corner pieces with moulded self-positioning to the baying enclosure system VX25, may be used with or without trim panels depending on the application. Large openings in the corner piece for optimum access to the screw-fastening point, may be concealed with a plastic corner and baying cover.

**Material:** Base/plinth corner piece: Sheet steel  
Base/plinth trim panel front/rear: Sheet steel  
Corner and baying cover: Plastic

**Colour:** RAL 9005

**Supply includes:** 4 base/plinth corner pieces, 100 mm high  
4 corner covers  
1 baying cover  
2 base/plinth trim panels, front/rear, 100 mm high  
Assembly parts

## Product features

**To fit:** Enclosure type: VX  
Width: = 1800 mm

**Dimensions:** Height: 100 mm

**Packs of:** 2 pc(s).

**EAN:** 4028177922082

<b>Customs tariff number:</b>	94032080
<b>ETIM 6.0:</b>	EC000721
<b>ETIM 5.0:</b>	EC000721
<b>eCl@ss 8.0/8.1:</b>	27182003
<b>eCl@ss 7.0/7.1:</b>	27182003
<b>eCl@ss 6.0/6.1:</b>	27182003
<b>eCl@ss 5.1/5.1.4:</b>	27182092
<b>Product description (long):</b>	VX Base/plinth corner piece, with base/plinth trim panel, front and rear, H: 100 mm, for W: 1800 mm, sheet steel