

Rittal – The System.

Faster – better – everywhere.

► **Base/plinth corner piece with base/plinth trim panels, front and rear, 200 mm for VX, TS, TS IT, SE, PC, IW, TP, CM – VX 8620.024**

Date : May 17, 2018

ENCLOSURES

POWER DISTRIBUTION

CLIMATE CONTROL

IT INFRASTRUCTURE

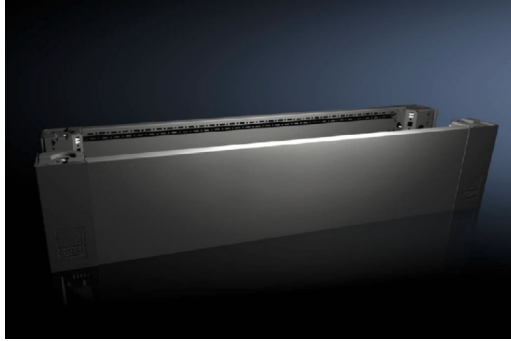
SOFTWARE & SERVICES

FRIEDHELM LOH GROUP



Base/plinth corner piece with base/plinth trim panels, front and rear, 200 mm for VX, TS, TS IT, SE, PC, IW, TP, CM – VX 8620.024

created: 17.05.2018 on www.rittal.com/com-en



Product description

Description: High-load capacity base/plinth corner pieces with moulded self-positioning to the baying enclosure system, may be used with or without trim panels depending on the application. Large openings in the corner piece for optimum access to the screw-fastening point, may be concealed with a plastic corner and baying cover.

Material: Base/plinth corner piece: Sheet steel
Base/plinth trim panel front/rear: Sheet steel
Corner and baying cover: Plastic

Colour: RAL 9005

Supply includes: 4 base/plinth corner pieces, 200 mm high
4 corner covers
1 baying cover
1 base/plinth trim panel, front/rear, 200 mm high
Assembly parts

Product features

To fit: Enclosure type: VX
Width: = 1000 mm

Dimensions: Height: 200 mm

Packs of: 2 pc(s).

EAN: 4028177922136

Customs tariff number:	94032080
ETIM 6.0:	EC000721
ETIM 5.0:	EC000721
eCl@ss 8.0/8.1:	27182003
eCl@ss 7.0/7.1:	27182003
eCl@ss 6.0/6.1:	27182003
eCl@ss 5.1/5.1.4:	27182092
Product description (long):	VX Base/plinth corner piece, with base/plinth trim panel, front and rear, H: 200 mm, for W: 1000 mm, sheet steel