

Rittal – The System.

Faster – better – everywhere.

► Base/plinth trim panels, side, 100 mm for base/plinth system VX – VX 8620.030

Date : May 23, 2018

ENCLOSURES

POWER DISTRIBUTION

CLIMATE CONTROL

IT INFRASTRUCTURE

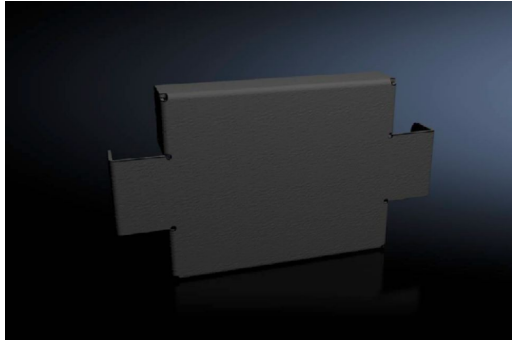
SOFTWARE & SERVICES

FRIEDHELM LOH GROUP



Base/plinth trim panels, side, 100 mm for base/plinth system VX – VX 8620.030

created: 23.05.2018 on www.rittal.com/com-en



Product description

Description: To finish off a base/plinth unit at the sides and for additional stabilisation or for the interior configuration of bayed base/plinths. One 200 mm high or two 100 mm high trim panels may optionally be fitted on 200 mm high base/plinths.

Material: Sheet steel

Colour: RAL 9005

Supply includes: 2 base/plinth trim panels
Assembly parts

Product features

To fit: Depth: = 300 mm

Dimensions: Height: 100 mm

Packs of: 2 pc(s).

EAN: 4028177922174

Customs tariff number: 94032080

ETIM 6.0: EC000721

ETIM 5.0: EC000721

eCl@ss 8.0/8.1:	27182003
eCl@ss 7.0/7.1:	27189270
eCl@ss 6.0/6.1:	27189270
eCl@ss 5.1/5.1.4:	27182092
Product description (long):	VX Base/plinth trim panel, side, , H: 100 mm, for D: 300 mm, sheet steel