

# Rittal – The System.

Faster – better – everywhere.

## ► Base/plinth trim panels, side, 100 mm for base/plinth system VX – VX 8620.031

Date : May 23, 2018

ENCLOSURES

POWER DISTRIBUTION

CLIMATE CONTROL

IT INFRASTRUCTURE

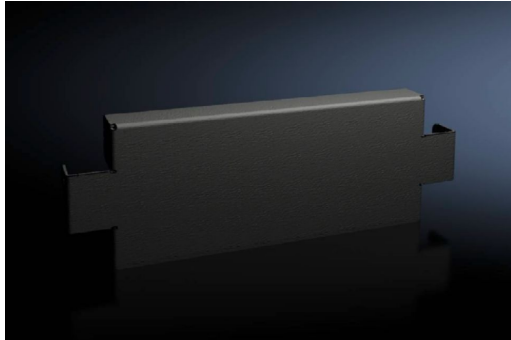
SOFTWARE & SERVICES

FRIEDHELM LOH GROUP



# Base/plinth trim panels, side, 100 mm for base/plinth system VX – VX 8620.031

created: 23.05.2018 on [www.rittal.com/com-en](http://www.rittal.com/com-en)



## Product description

**Description:** To finish off a base/plinth unit at the sides and for additional stabilisation or for the interior configuration of bayed base/plinths. One 200 mm high or two 100 mm high trim panels may optionally be fitted on 200 mm high base/plinths.

**Material:** Sheet steel

**Colour:** RAL 9005

**Supply includes:** 2 base/plinth trim panels  
Assembly parts

## Product features

**To fit:** Depth: = 400 mm

**Dimensions:** Height: 100 mm

**Packs of:** 2 pc(s).

**EAN:** 4028177922181

**Customs tariff number:** 94032080

**ETIM 6.0:** EC000721

**ETIM 5.0:** EC000721

<b>eCl@ss 8.0/8.1:</b>	27182003
<b>eCl@ss 7.0/7.1:</b>	27189270
<b>eCl@ss 6.0/6.1:</b>	27189270
<b>eCl@ss 5.1/5.1.4:</b>	27182092
<b>Product description (long):</b>	VX Base/plinth trim panel, side, H: 100 mm, for D: 400 mm, sheet steel