

Rittal – The System.

Faster – better – everywhere.

► **Base/plinth corner
piece with base/plinth
trim panels, front and
rear, 100 mm,
stainless steel – VX
8620.051**

Date : Jun 18, 2018

ENCLOSURES

POWER DISTRIBUTION

CLIMATE CONTROL

IT INFRASTRUCTURE

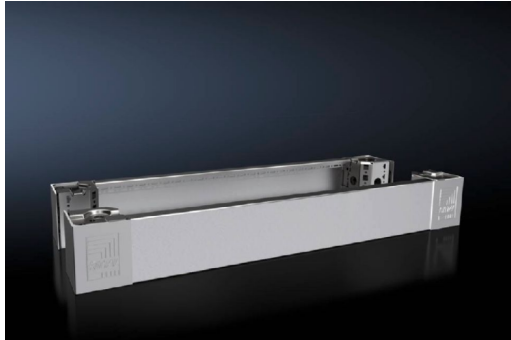
SOFTWARE & SERVICES

FRIEDHELM LOH GROUP



Base/plinth corner piece with base/plinth trim panels, front and rear, 100 mm, stainless steel – VX 8620.051

created: 18.06.2018 on www.rittal.com/com-en



Product description

Description: High-load capacity base/plinth corner pieces with moulded self-positioning to the baying enclosure system, may be used with or without trim panels depending on the application. Large openings in the corner piece for optimum access to the screw-fastening point, may be concealed with a plastic corner and baying cover.

Material: Base/plinth corner piece: Stainless steel 1.4301 (AISI 304)
Base/plinth trim panel front/rear: Stainless steel 1.4301 (AISI 304)
Corner and baying cover: Plastic

Surface finish: Trim panel: Brushed, grain size 400

Supply includes: 4 base/plinth corner pieces
4 corner covers
1 baying cover
2 base/plinth trim panels, front/rear, 100 mm high
Assembly parts

Product features

To fit: Width: = 800 mm

Dimensions: Height: 100 mm

Packs of: 2 pc(s).

EAN: 4028177922303

Customs tariff number: 94032080

| | |
|------------------------------------|---|
| ETIM 6.0: | EC000721 |
| ETIM 5.0: | EC000721 |
| eCl@ss 8.0/8.1: | 27182003 |
| eCl@ss 7.0/7.1: | 27182003 |
| eCl@ss 6.0/6.1: | 27182003 |
| eCl@ss 5.1/5.1.4: | 27182092 |
| Product description (long): | VX Base/plinth corner piece, with base/plinth trim panel, front and rear, H: 100 mm, for W: 800 mm, stainless steel, 1.4301 |