

Rittal – The System.

Faster – better – everywhere.

► **Base/plinth corner pieces with base/plinth trim panels, front and rear, 200 mm, stainless steel – VX 8620.063**

Date : Jun 18, 2018

ENCLOSURES

POWER DISTRIBUTION

CLIMATE CONTROL

IT INFRASTRUCTURE

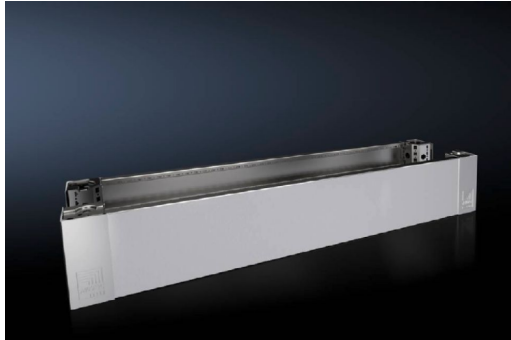
SOFTWARE & SERVICES

FRIEDHELM LOH GROUP



Base/plinth corner pieces with base/plinth trim panels, front and rear, 200 mm, stainless steel – VX 8620.063

created: 18.06.2018 on www.rittal.com/com-en



Product description

Description: High-load capacity base/plinth corner pieces with moulded self-positioning to the baying enclosure system, may be used with or without trim panels depending on the application. Large openings in the corner piece for optimum access to the screw-fastening point, may be concealed with a plastic corner and baying cover.

Material: Base/plinth corner piece: Stainless steel 1.4301 (AISI 304)
Base/plinth trim panel front/rear: Stainless steel 1.4301 (AISI 304)
Corner and baying cover: Plastic

Surface finish: Trim panel: Brushed, grain size 400

Supply includes: 4 base/plinth corner pieces
4 corner covers
1 baying cover
2 base/plinth trim panels, front/rear, 100 mm high
Assembly parts

Product features

To fit: Width: = 1200 mm

Dimensions: Height: 200 mm

Packs of: 2 pc(s).

EAN: 4028177922365

Customs tariff number: 94032080

ETIM 6.0:	EC000721
ETIM 5.0:	EC000721
eCl@ss 8.0/8.1:	27182003
eCl@ss 7.0/7.1:	27182003
eCl@ss 6.0/6.1:	27182003
eCl@ss 5.1/5.1.4:	27182092
Product description (long):	VX Base/plinth corner piece, with base/plinth trim panel, front and rear, H: 200 mm, for W: 1200 mm, stainless steel, 1.4301