

Rittal – The System.

Faster – better – everywhere.

► Base/plinth trim panels, side, 100 mm, stainless steel for base/plinth system VX – VX 8620.072

Date : Jun 19, 2018

ENCLOSURES

POWER DISTRIBUTION

CLIMATE CONTROL

IT INFRASTRUCTURE

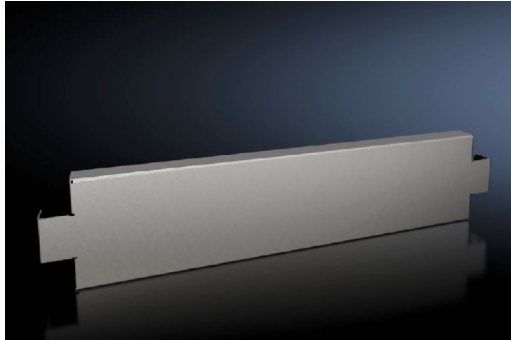
SOFTWARE & SERVICES

FRIEDHELM LOH GROUP



Base/plinth trim panels, side, 100 mm, stainless steel for base/plinth system VX – VX 8620.072

created: 19.06.2018 on www.rittal.com/com-en



Product description

Description:	To finish off a base/plinth unit at the sides and for additional stabilisation or for the interior configuration of bayed base/plinths. One 200 mm high or two 100 mm high trim panels may optionally be fitted on 200 mm high base/plinths.
Material:	Stainless steel 1.4301 (AISI 304)
Surface finish:	Brushed, grain 400
Supply includes:	Assembly parts

Product features

To fit:	Depth: = 600 mm
Dimensions:	Height: 100 mm
Packs of:	2 pc(s).
EAN:	4028177922396
Customs tariff number:	94032080
ETIM 6.0:	EC000721
ETIM 5.0:	EC000721

eCl@ss 8.0/8.1:	27182003
eCl@ss 7.0/7.1:	27189270
eCl@ss 6.0/6.1:	27189270
eCl@ss 5.1/5.1.4:	27182092
Product description (long):	VX Base/plinth trim panel, side, H: 100 mm, for D: 600 mm, stainless steel, 1.4301