

Rittal – The System.

Faster – better – everywhere.

► Base/plinth trim panels, side, 200 mm, stainless steel for base/plinth system VX – VX 8620.080

Date : Jun 19, 2018

ENCLOSURES

POWER DISTRIBUTION

CLIMATE CONTROL

IT INFRASTRUCTURE

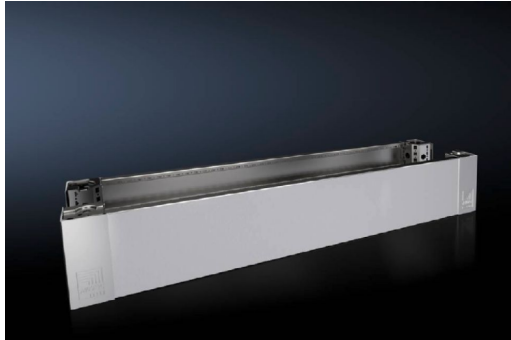
SOFTWARE & SERVICES

FRIEDHELM LOH GROUP



Base/plinth trim panels, side, 200 mm, stainless steel for base/plinth system VX – VX 8620.080

created: 19.06.2018 on www.rittal.com/com-en



Product description

| | |
|-------------------------|--|
| Description: | To finish off a base/plinth unit at the sides and for additional stabilisation or for the interior configuration of bayed base/plinths. One 200 mm high or two 100 mm high trim panels may optionally be fitted on 200 mm high base/plinths. |
| Material: | Stainless steel 1.4301 (AISI 304) |
| Surface finish: | Brushed, grain 400 |
| Supply includes: | Assembly parts |

Product features

| | |
|-------------------------------|-----------------|
| To fit: | Depth: = 400 mm |
| Dimensions: | Height: 200 mm |
| Packs of: | 2 pc(s). |
| EAN: | 4028177922402 |
| Customs tariff number: | 94032080 |
| ETIM 6.0: | EC000721 |
| ETIM 5.0: | EC000721 |

| | |
|--|--|
| eCl@ss 8.0/8.1: | 27182003 |
| eCl@ss 7.0/7.1: | 27189270 |
| eCl@ss 6.0/6.1: | 27189270 |
| eCl@ss 5.1/5.1.4: | 27182092 |
| Product description (long): | VX Base/plinth trim panel, side, H: 200 mm, for D: 400 mm, stainless steel, 1.4301 |