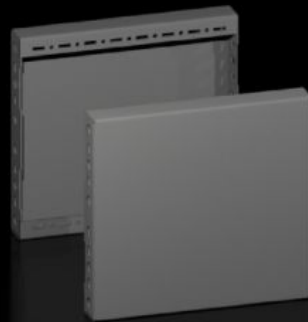


Rittal – The System.

Faster – better – everywhere.



VX 8660.041

Base/plinth trim panels, side

State: 20/11/2023 (Source: rittal.com/com-en)

ENCLOSURES

POWER DISTRIBUTION

CLIMATE CONTROL

IT INFRASTRUCTURE

SOFTWARE & SERVICES

FRIEDHELM LOH GROUP



VX 8660.041 - Base/plinth trim panels, side for base/plinth system VX, sheet steel, new version

To finish off a base/plinth unit at the sides and for additional stability or interior configuration of bayed base/plinths. One 200 mm high or two 100 mm high trim panels may optionally be fitted on 200 mm high base/plinths.

Features

Model No.	VX 8660.041
Design	New version
Material	Sheet steel
Colour	RAL 9005
Supply includes	Assembly parts
Dimensions	Height: 200 mm
To fit	Depth: = 400 mm
Type rating to UL 50E	Type 1, 12
Packs of	2 pc(s).
To fit	for base/plinth system VX, sheet steel, new version
Customs tariff number	94039910
EAN	4028177978287