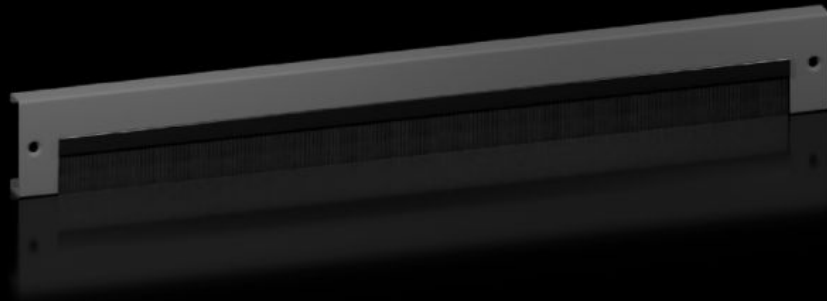


Rittal – The System.

Faster – better – everywhere.



VX 8660.094

Base/plinth trim panels with brush strip

State: 20/11/2023 (Source: rittal.com/com-en)

ENCLOSURES

POWER DISTRIBUTION

CLIMATE CONTROL

IT INFRASTRUCTURE

SOFTWARE & SERVICES

FRIEDHELM LOH GROUP



VX 8660.094 - Base/plinth trim panels with brush strip for base/plinth system VX, sheet steel, new version

For cable entry in the base/plinth. With a 200 mm base/plinth height, one or two trim panels with brush strip may optionally be used. Thanks to the optional trim panel attachment, the trim panels with brush strip may also be fitted at the front, rear or side of the base/plinth corner piece.

Features

Model No.	VX 8660.094
Design	New version with brush strip
Material	Base/plinth trims: Sheet steel Brush strip: Plastic, self-extinguishing
Colour	RAL 9005
Supply includes	Assembly parts
Dimensions	Height: 100 mm
To fit	To fit width/depth: 1,000 mm
Type rating to UL 50E	Type 1, 12
Packs of	2 pc(s).
To fit	for base/plinth system VX, sheet steel, new version
Customs tariff number	73269098
EAN	4028177985476