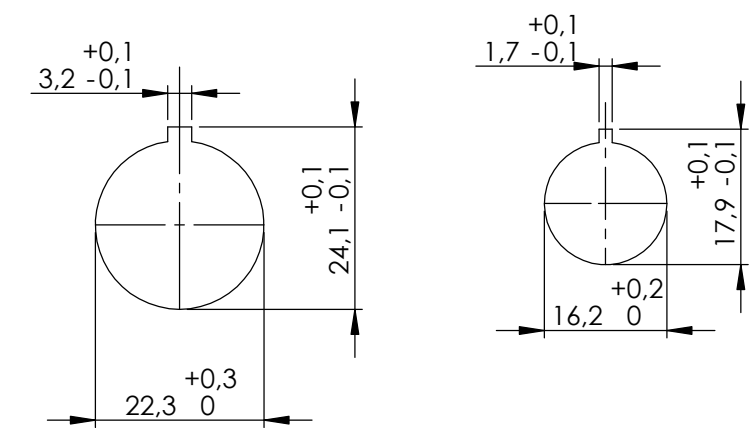


Bohrbild / Hole pattern



Schaltertype / Switch type
BC03/6ZM /NS/F101

Ith	10A
Ue	500V
AC23 (400V)	3,0kW
AC3 (400V)	2,2kW
Anschlussquerschnitt max Connection cross max:	1,5mm ²
Drehmoment Klemmen / Torque clamps	0,4Nm
Schutzart / Protection	IP65