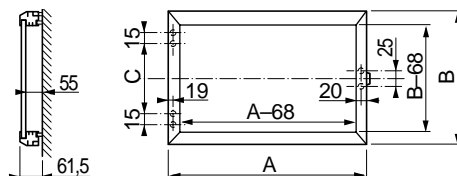


door window IP 54

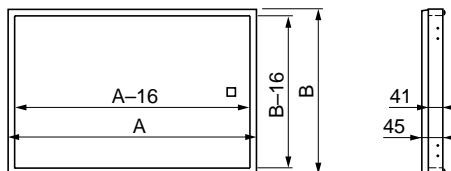
- Prevents unauthorised personnel tampering with or accidentally operating the control devices.
- Enables instant reading of all displayed information without opening the door.
- Construction: aluminium frame with altuglas window.
- Fitted with hinges for opening.
- Closure by lock N° 1242 E, RONIS type 911 B.
- Resistance to external mechanical impact: IK 08.
- Delivered with drilling template.



reference	door window		
	A	B	C
17644	400	400	220
17645	500	400	220
17646	600	400	220
17647	800	400	220
17655	500	500	320
17657	600	500	320
17658	800	500	320
17666	600	600	420

acrylic window

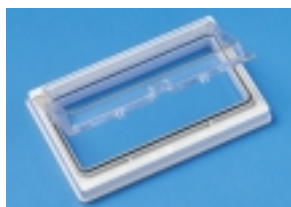
- Window in smoked acrylic, pivoting, with gasket for mounting in front panel (IP 55).
- Closure by lock N° 1242 E (2 locks for height 800 mm).
- Supplied with 2 hinges (3 hinges for height 800 mm) and fixings for assembly.
- Resistance to external mechanical impact: IK 08.
- Delivered with drilling template.



reference	acrylic window		
	A	B	depth
17627	400	200	45
17630	400	400	45
17633	400	500	45
17636	400	600	45
17639	400	800	45
17628	500	200	45
17631	500	400	45
17634	500	500	45
17637	500	600	45
17640	500	800	45
17629	600	200	45
17632	600	400	45
17635	600	500	45
17638	600	600	45
17641	600	800	45

plastic window

- Plastic window with hinged transparent cover for mounting in front panel (IP 55).
- External dimensions: 213 x 133 mm.
- Internal dimensions of window: 180 x 78 mm.
- Delivered with drilling template.



09180

front panel with environment protection window (IP 55)

- Frame with hinged transparent cover for assembly in front panel of modular equipment.
- Opening: 46 x 180 mm (10 modules).



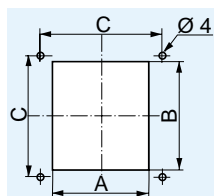
09181/09178

equipment fixing kit

- Fixing kit comprising a DIN rail and 2 supports.
- Parts are delivered assembled.

ventilation louvres

- Material: sheet steel.
- Protection: textured paint finish, colour grey RAL 7032.



reference	description
09180	Plastic window (1)

(1) Polycarbonate cover, PVC body.

reference	description
09181	Front panel frame (1)
09178	Fixing kit (1)

(1) Cut-out detail: see page 522

reference	external dimensions
21407	120 x 120 mm
21410	160 x 160 mm
21418	220 x 220 mm

cut-out dimensions

external dimensions	length of louvre	cut-out dimensions		
		A	B	C
120 x 120	70	80	90	104.8
160 x 160	100	110	130	140
220 x 220	180	190	190	200