

## Datasheet - BN 32-10

Magnetic reed switch / BN 32



- Non-contact principle
- 1 Reed kontakts
- Long life
- Actuating surface and direction of actuation marked by switch symbol
- 85 mm x 26 mm x 24 mm
- Thermoplastic enclosure
- Actuating distance up to 55 mm depending on actuating magnet and version
- Spade connector

(Minor differences between the printed image and the original product may exist!)


### Ordering details

Product type description	BN 32-10
Article number	101057228
EAN code	4030661025124

### Approval

Approval	-
----------	---

### Global Properties

Product name	BN 32
Standards	-
Compliance with the Directives (Y/N) 	Yes
suitable for elevators (Y/N)	No
Active principle	Magnetic drive
Materials	
- Material of the housings	Plastic, glass-fibre reinforced thermoplastic
- Material of the active surface	Plastic
Housing construction form	Block
Weight	60 g
Recommended actuator	BP 10, 2 x BP 10, BP 15, 2 x BP 15, 2 x BP 15/2, BP 34, BP 20, BP 31, BP 11, BP 12, BP 21, BE 20

### Mechanical data

Design of electrical connection	Flat plug-in connector 4.8 mm
Mechanical life	1.000.000.e+9 operations
Electrical lifetime	1.000.000 ... 1.000.000.e+9 operations
Switching frequency	max. 300/s
Actuating planes	Actuation from side
Active area	lateral

Switch distance S <sub>n</sub>	5 mm ... 40 mm BP 10 = 5 mm 2 x BP 10 = 12 mm BP 15 = 6 mm 2 x BP 15 = 12 mm 2 x BP 15/2 = 12mm BP 34 = 15 mm BP 20 = 15 mm BP 31 = 15 mm BP 11 = 5 ... 15 mm BP 12 = 10 ... 25 mm BP 21 = 20 ... 40 mm BE 20 = 15 mm
- notice	Actuating distance up to 40 mm depending on actuating magnet and version
Type of actuation	Magnet
resistance to shock	-
resistant to vibration	15 g, on sine wave oscillation
Bounce duration	0,3 ms ... 0,6 ms
Latching (Y/N)	No
Actuating speed	max. 18 m/s
Switching point accuracy	± 0,25 mm

## Ambient conditions

---

Ambient temperature	
- Min. environmental temperature	-25 °C
- Max. environmental temperature	+90 °C
Protection class	IP67

## Electrical data

---

Design of control element	Normally open contact (NO)
Number of shutters	1 piece
Number of openers	0 piece
Switching time - Close	0,3 ms ... 1.5 ms
Switching time - Open	-
Voltage type	VAC
Dielectric strength	> 600 VAC (50 Hz)
Switching voltage	max. 250 VAC
Switching current	max. 3 A
Switching capacity	max. 120 VA / W

## Outputs

---

Design of control output	Reed kontakts
--------------------------	---------------

## LED switching conditions display

---

LED switching conditions display (Y/N)	No
--	----

## ATEX

---

Explosion protection categories for gases	None
Explosion protected category for dusts	None

## Dimensions

---

#### Dimensions of the sensor

- Width of sensor	85 mm
- Height of sensor	26 mm
- Length of sensor	24 mm

#### notice

---

The opening and closing functions depend on the direction of actuation, the actuating magnets and the polarity of the actuating magnets.

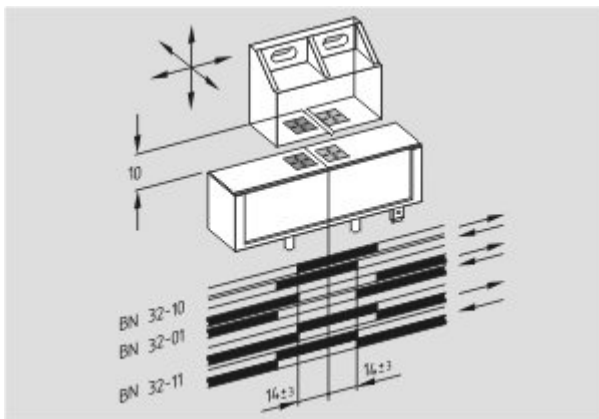
#### Included in delivery

---




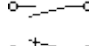

Actuators must be ordered separately.

#### Diagram

---



#### Note Diagram

-  positive break NC contact
-  active
-  no active
-  Normally-open contact
-  Normally-closed contact

#### Documents

---

**Declaration of conformity** (de) 188 kB, 10.07.2012

Code: \_\_bn\_p01

**notice - Switch distance** (de) 36 kB, 07.08.2009

Code: s\_bnbsp01

**notice - Switch distance** (nl) 39 kB, 07.08.2009

Code: s\_bnbsp04

**notice - Switch distance** (en) 42 kB, 07.08.2009

Code: s\_bnbsp02

**notice - Switch distance** (fr) 41 kB, 07.08.2009

Code: s\_bnbsp03

**notice - Switch distance** (pt) 39 kB, 07.08.2009

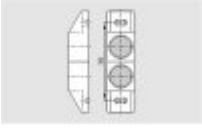
Code: s\_bnbsp10



## System components

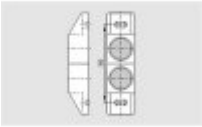
---

### Actuator



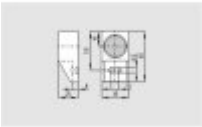
#### 101059927 - BP 2x21 S

- Al-metal housing
  - S-pole marked red
  - Suitable for mounting on ferrous material
- 



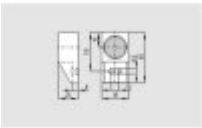
#### 101059928 - BP 2x21 N

- Al-metal housing
  - N-pole marked green
  - Suitable for mounting on ferrous material
- 



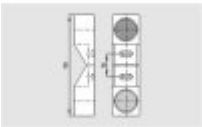
#### 101057534 - BP 21 S

- Al-metal housing
  - S-pole marked red
  - Suitable for mounting on ferrous material
- 



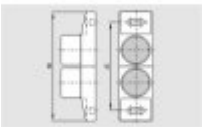
#### 101057536 - BP 21 N

- Al-metal housing
  - N-pole marked green
  - Suitable for mounting on ferrous material
- 



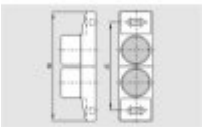
#### 101059921 - BP 21

- Al-metal housing
  - S-pole marked red
  - N-pole marked green
  - Suitable for mounting on ferrous material
- 



#### 101059926 - BP 2x12 S

- Al-metal housing
  - S-pole marked red
  - Suitable for mounting on ferrous material
- 

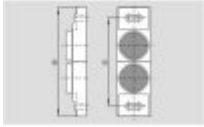


#### 101059925 - BP 2x12 N

- Al-metal housing
  - N-pole marked green
  - Suitable for mounting on ferrous material
- 

#### 101059917 - BP 12 N

- Al-metal housing

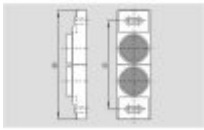


- N-pole marked green
- Suitable for mounting on ferrous material



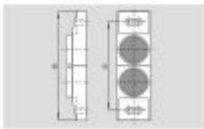
**101059916 - BP 12**

- Al-metal housing
- S-pole marked red
- N-pole marked green
- Suitable for mounting on ferrous material



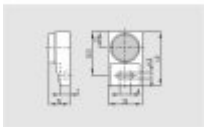
**101059930 - BP 2x11 S**

- Al-metal housing
- S-pole marked red
- Suitable for mounting on ferrous material



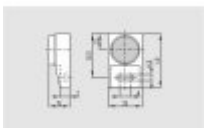
**101059929 - BP 2x11 N**

- Al-metal housing
- N-pole marked green
- Suitable for mounting on ferrous material



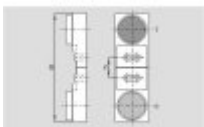
**101057533 - BP 11 S**

- Al-metal housing
- S-pole marked red
- Suitable for mounting on ferrous material



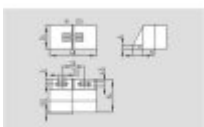
**101059923 - BP 11 N**

- Al-metal housing
- N-pole marked green
- Suitable for mounting on ferrous material



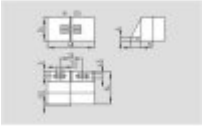
**101059922 - BP 11**

- Al-metal housing
- S-pole marked red
- N-pole marked green
- Suitable for mounting on ferrous material



**101057521 - BP 31 S**

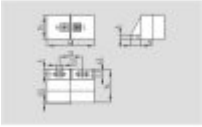
- thermoplastic enclosure
- S-pole marked red
- Suitable for mounting on ferrous material with a distance of 20 mm



---

**101057520 - BP 31 N**

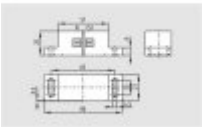
- thermoplastic enclosure
- N-pole marked green
- Suitable for mounting on ferrous material with a distance of 20 mm



---

**101057530 - BP 31**

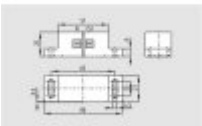
- thermoplastic enclosure
- S-pole marked red
- N-pole marked green
- Suitable for mounting on ferrous material with a distance of 20 mm



---

**101057541 - BP 20 S**

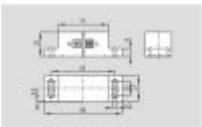
- Al-metal housing
- S-pole marked red
- Suitable for mounting on ferrous material with a distance of 20 mm



---

**101057538 - BP 20 N**

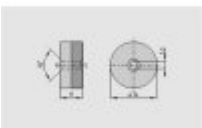
- Al-metal housing
- N-pole marked green
- Suitable for mounting on ferrous material with a distance of 20 mm



---

**101057549 - BP 20**

- Al-metal housing
- S-pole marked red
- N-pole marked green
- Suitable for mounting on ferrous material with a distance of 20 mm



---

**101057553 - BP 34**

- thermoplastic enclosure
- S-pole marked red
- N-pole marked green
- Suitable for mounting on ferrous material with a distance of 25 mm



---

**101060165 - BP 15/2**

- Unenclosed
- Polarity stamped in
- Suitable for mounting on ferrous material with a distance of 18 mm

---

**101060163 - BP 15**

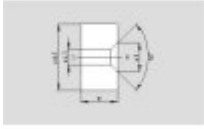
- thermoplastic enclosure
- N-pole marked green
- S-pole marked red
- Suitable for mounting on ferrous material with a distance of 18 mm



---

**101057531 - BP 10**

- Unenclosed
- Colour coding of poles by lables



---

K.A. Schmersal GmbH & Co. KG, Möddinghofe 30, D-42279 Wuppertal

The data and values have been checked thoroughly. Technical modifications and errors excepted.

Generiert am 27.05.2013 - 16:25:48h Kasbase 2.2.17.F DBI

Image

Image  
et=sS  
e