



## Z4VH 336-11Z-M20

- Snap action with constant contact pressure up to switching point
- 1 Cable entry M 20 x 1.5
- Design to EN 50041
- Lever angle adjustable in 10° steps
- Thermoplastic enclosure
- Double-insulated
- Good resistance to oil and petroleum spirit
- Wide range of alternative actuators
- Actuator heads can be repositioned by 4 x 90°

## Data

### Ordering data

Product type description	Z4VH 336-11Z-M20
Article number (order number)	101151762
EAN (European Article Number)	4030661163611
eCl@ss number, Version 9.0	27-27-26-01
eCl@ss number, Version 11.0	27-27-26-01
ETIM number, version 6.0	EC000030
ETIM number, version 7.0	EC000030

### Approval - Standards

Certificates	cULus CCC EAC
--------------	---------------------

### General data

Housing construction form	Norm construction design
Actuator type to DIN EN 50041	A
Enclosure material	Plastic, glass-fibre reinforced thermoplastic, self-extinguishing
Material of the contacts, electrical	Silver
Lever material	Metal film
Roller material	Plastic
Gross weight	165 g

### General data - Features

Safety functions	Yes
Number of auxiliary contacts	1
Number of safety contacts	1

### Safety appraisal

Standards	BG-GS-ET-15 EN ISO 13849-1 EN 60947-5-1
Mission Time	20 Year(s)

### Safety appraisal - Safety outputs

B10d Normally-closed contact (NC)	20,000,000 Operations
-----------------------------------	-----------------------

### Mechanical data

Actuating element	Roller lever
Mechanical life, minimum	30,000,000 Operations
Actuating speed, maximum	2.5 m/s
Note (Actuating speed)	Actuating speed with actuating angle 30° to switch axis
Note Bounce duration	Bounce duration in accordance with actuating speed
Actuating torque, minimum	0.3 Nm

## Mechanical data - Connection technique

Terminal Connector	Screw connection
Cable section, minimum	0.75 mm <sup>2</sup>
Cable section, maximum	2.5 mm <sup>2</sup>
Note (Cable section)	All indications about the cable section are including the conductor ferrules.

## Mechanical data - Dimensions

Length of sensor	60.5 mm
Width of sensor	40.5 mm
Height of sensor	129.5 mm

## Ambient conditions

Degree of protection	IP65 to EN 60529 IP67 to EN 60529
Ambient temperature, minimum	-30 °C
Ambient temperature, maximum	+80 °C

## Ambient conditions - Insulation value

Rated insulation voltage $U_i$	500 V
Rated impulse withstand voltage $U_{imp}$	6 kV

## Electrical data

Thermal test current	10 A
Required rated short-circuit current to EN 60947-5-1	1,000 A
Utilisation category AC-15	230 VAC
Utilisation category AC-15	4 A
Utilisation category DC-13	24 VDC
Utilisation category DC-13	4 A

Switching element	NO contact, NC contact
Switching principle	Snap switch element
Switching frequency	5,000 /h
Switchover time, maximum	2 ms

## **Ordering code**

Product type description:  
(1)(2) 336-(3)Z(4)-(5)-(6)-(7)

---

(1)	
<b>Z</b>	Snap action
<b>T</b>	Slow action (not for AF/S)
(2)	
<b>S</b>	Plunger S
<b>R</b>	Roller plunger R
<b>H</b>	Roller lever H
<b>10H</b>	Rod lever 10H
<b>7H</b>	Roller lever 7H
<b>1K</b>	Offset roller lever 1K
<b>3K</b>	Angle roller lever 3K
<b>RMS</b>	Brass roller
(3)	
<b>11</b>	1 NO contacts/1 NC contact
<b>02</b>	2 NC contact
<b>20</b>	2 NO contacts, (switches with 2 NO contacts are not suitable for safety applications)
<b>01/01</b>	1 NC contact left / 1 NC contact right
(4)	
<b>H</b>	Slow action with staggered contacts
<b>UE</b>	Slow action with overlapping contacts
(5)	
<b>without</b>	Cable entry M20
<b>NPT</b>	Cable entry NPT 1/2"
<b>ST</b>	M12 connector with A-coding
<b>ST-2310</b>	M12 connector with B-coding
(6)	
<b>2138</b>	Roller lever 7H for position switches with safety function

## Pictures

### Product picture (catalogue individual photo)

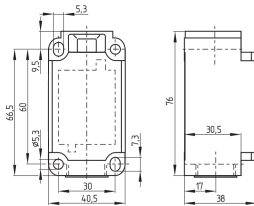


ID: k336hf01

| 697.8 kB | .jpg | 352.778 x 752.122 mm - 1000 x 2132 px - 72 dpi

| 87.5 kB | .png | 74.083 x 157.692 mm - 210 x 447 px - 72 dpi

### Dimensional drawing basic component



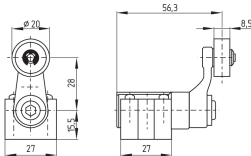
ID: 1-336g01

| 51.4 kB | .cdr |

| 4.1 kB | .png | 74.083 x 51.506 mm - 210 x 146 px - 72 dpi

| 107.0 kB | .jpg | 352.778 x 245.181 mm - 1000 x 695 px - 72 dpi

### Dimensional drawing actuator



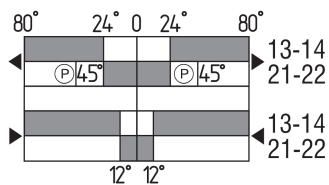
ID: 1h336g01

| 65.6 kB | .cdr |

| 4.1 kB | .png | 74.083 x 51.858 mm - 210 x 147 px - 72 dpi

| 84.5 kB | .jpg | 352.778 x 247.297 mm - 1000 x 701 px - 72 dpi

### Switch travel diagram



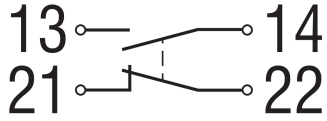
ID: kh335s02

| 25.4 kB | .cdr |

| 3.0 kB | .png | 74.083 x 40.569 mm - 210 x 115 px - 72 dpi

| 98.4 kB | .jpg | 352.778 x 193.322 mm - 1000 x 548 px - 72 dpi

## Diagram



ID: k1o1sk01

| 52.2 kB | .jpg | 352.778 x 143.581 mm - 1000 x 407 px - 72 dpi

Schmersal, Inc., 15 Skyline Drive, Hawthorne, NY 10532

The details and data referred to have been carefully checked. Images may diverge from original. Further technical data can be found in the manual. Technical amendments and errors possible.

Generated on: 10/19/2021, 8:34 AM