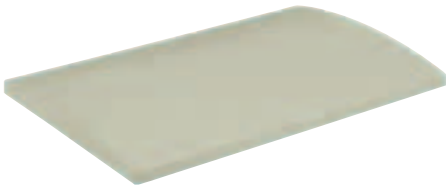


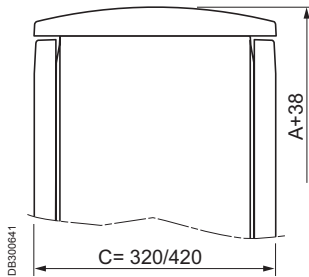
Composition accessories

Top-mounting accessories

Fixing accessories



PB501369



Canopy

- Polyester material reinforced with fibreglass, moulded by hot compression, self-extinguishing, RAL 7032 grey.
- It can be installed in all enclosure models.
- High resistance to impacts, temperature and bad weather.
- Delivered with the fixings required for installation.
- Increases the height (A) of the enclosure by 38 mm, without modifying its width or depth.
- Essential for outdoor use.

For enclosure (mm)		Reference
Width	Depth (C)	
500	320	NSYTJPLA53
750	320	NSYTJPLA73
1000	320	NSYTJPLA103
1250	320	NSYTJPLA123
500	420	NSYTJPLA54
750	420	NSYTJPLA74
1000	420	NSYTJPLA104
1250	420	NSYTJPLA124



PB501055

Grille for IP 54 instead of IP 44

- For enclosure versions PLAT and PLAZT.
- It is installed from the inside in the upper ventilation opening.
- Delivered with G2 M1 standard synthetic filter, see **ClimaSys** section.
- 1 grille for 500 and 750 mm wide enclosures, 2 grilles for 1000 and 1250 mm wide enclosures.
- Prevents the entry of dust and provides the enclosure with IP 5X protection at the top.
- Maintains the possibility of ventilation.

Description	Reference
Outlet grille	NSYCAG125LPF



PB501184

Wall-fixing lugs

- Fixing on the sides by 4 or 6 lugs in horizontal position (6 lugs for enclosures with height ≥ 1000 mm).
- Drilling positions and marks inside the side panels.
- Passivated zinc-coated material.
- Maximum acceptable load: 180 kg.
- Set of 6 lugs and fixings.
- 10 mm fixing plane on the rear of the enclosure plane.

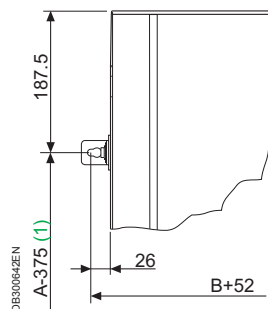
Description	Reference
Wall-fixing lugs	NSYFMPLA



Specific



Available stainless-steel wall-fixing lugs.



(1) For enclosures with height ≥ 1000 mm, 1 extra lug at the centre of the A-375 side.