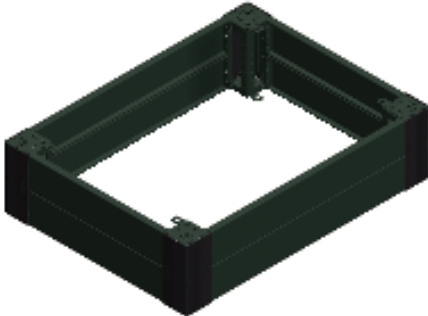




Price*: 55.23 GBP



Main

Range	Spacial
Accessory / separate part category	Enclosure accessory
Product or component-type	Plinth front
Device application	Multi-purpose
Enclosure nominal dimensions	-
Device composition	1 front panel 1 rear panel 4 corner 4 corner cover Fixing elements
Range compatibility	Spacial CRN Spacial S3D Spacial SF Spacial SM Spacial SD
Mounting support	Plinth side panels


Complementary

Fixing mode	By fixing element - on structure location
Colour	Grey RAL 7022
Surface finish	Epoxy-polyester powder
Permanent permissible load	1300 kg
Height	100 mm
Width	Nominal : 1200 mm

Environment

IP degree of protection	IP30 complete plinth
IK degree of protection	IK10

Offer Sustainability

Sustainable offer status	Green Premium product
RoHS (date code: YYWW)	Compliant - since 0940 - Schneider Electric declaration of conformity  Schneider Electric declaration of conformity
REACH	Reference not containing SVHC above the threshold
Product environmental profile	Available
Product end of life instructions	Need no specific recycling operations

Contractual warranty

Warranty period	18 months
-----------------	-----------

Product Life Status : **Commercialised**

The information provided in this documentation contains general descriptions and/or technical characteristics of the performance of the products contained herein. This documentation is not intended as a substitute for and is not to be used for determining suitability or reliability of these products for specific user applications. It is the duty of any such user or integrator to perform the appropriate and complete risk analysis, evaluation and testing of the products with respect to the relevant specific application or use thereof. Neither Schneider Electric Industries SAS nor any of its affiliates or subsidiaries shall be responsible or liable for misuse of the information contained herein. *Prices are indicative