



SENTRON, Fuse switch disconnecter 3NP1, 3-pole, NH00, 160 A, for assembly and installation on mounting plate, Box terminal, Cover level 45 mm

Model

| | |
|---|-------------------------------|
| product brand name | SENTRON |
| product designation | 3NP1 fuse switch disconnecter |
| design of the product | cover level 45 mm |
| design of the safety monitoring | Without |
| design of the actuating element | Cover handle |
| design of the load switch strip form | No |
| type of the driving mechanism motor drive | No |

General technical data

| | |
|--|---|
| number of poles | 3 |
| type of device | For assembly and installation on mounting plate |
| size of disconnecting link | 00 and 000 |
| size of fuse link | NH000, NH00 |
| let-through current with closed switch maximum permissible | 23 kA |
| mechanical service life (operating cycles) typical | 2 000 |
| power factor | |
| • at AC-22 B | 0.65 |
| • at AC-23 B | 0.45 |
| • with capacitive load | -0.25 |
| fuse system | LV HRC fuse |
| degree of pollution | 3 |

Voltage

| | |
|--|---------|
| insulation voltage | |
| • rated value | 690 V |
| • with degree of pollution 3 at AC rated value | 690 V |
| • with degree of pollution 2 at AC rated value | 1 000 V |
| power factor at AC-21 B | 0.95 |
| surge voltage resistance rated value | 8 kV |
| operating voltage | |
| • at AC rated value maximum | 690 V |
| • at DC rated value | 440 V |
| • at DC rated value maximum | 440 V |

Protection class

| | |
|---|------|
| protection class IP | |
| • with closed switch with cover or cable lug cover | IP40 |
| • with closed switch without cover or cable lug cover | IP30 |
| • open | IP20 |
| • on the front | IP40 |

Dissipation

| | |
|----------------|--|
| power loss [W] | |
|----------------|--|

| | |
|--|------|
| • with conventional rated thermal current without fuse per pole | 5 W |
| • with conventional rated thermal current without fuse per device | 15 W |
| • for rated value of the current at AC in hot operating state per pole | 17 W |
| • of the fuse per fuse maximum | 12 W |

Main circuit

| | |
|---|-------|
| operational current | |
| • rated value | 160 A |
| • with capacitive load at 400 V rated value | 72 A |
| • with capacitive load at 500 V rated value | 55 A |

Auxiliary circuit

| | |
|--|---|
| number of CO contacts for auxiliary contacts | 0 |
| number of NC contacts for auxiliary contacts | 0 |
| number of NO contacts for auxiliary contacts | 0 |

Suitability

| | |
|-----------------------------|-----|
| suitability for use | |
| • main switch | No |
| • switch disconnecter | Yes |
| • EMERGENCY OFF switch | No |
| • safety switch | Yes |
| • maintenance/repair switch | Yes |

Product details

| | |
|---|-----|
| product component | |
| • trip indicator | No |
| • undervoltage release | No |
| • undervoltage release with leading contact | No |
| product feature sealable | Yes |
| product extension auxiliary switch | Yes |
| product extension optional | |
| • locking capability | Yes |
| • motor drive | No |
| • phase failure monitoring | Yes |
| • fuse monitoring | Yes |
| • voltage trigger | No |
| • overvoltage protection monitoring | Yes |

Product function

| | |
|-------------------------------------|----|
| product function | |
| • fuse monitoring | No |
| • overvoltage protection monitoring | No |

Connections

| | |
|--|--------------------|
| arrangement of electrical connectors for main current circuit | other |
| connectable conductor cross-section for main contacts | |
| • solid or stranded minimum | 6 mm ² |
| • solid or stranded maximum | 70 mm ² |
| • finely stranded with core end processing minimum | 6 mm ² |
| • finely stranded with core end processing maximum | 50 mm ² |
| • stranded minimum | 6 mm ² |
| • stranded maximum | 70 mm ² |
| tightening torque with screw-type terminals | |
| • minimum | 10 N·m |
| • maximum | 10 N·m |
| type of connectable conductor cross-sections of the laminated conductors maximum | 9 x 12 mm |
| type of connection technology | Box terminal |
| type of electrical connection for main current circuit | box terminal |

Mechanical Design

| | |
|------------------|----------------|
| height | 202 mm |
| width | 105.8 mm |
| depth | 86.5 mm |
| fastening method | mounting plate |

| | |
|--|---------------------|
| fastening method | Yes |
| <ul style="list-style-type: none"> • floor mounting • 4-hole front mounting • front mounting with central attachment • rail mounting | No |
| mounting position | horizontal/vertical |
| net weight | 0.73 kg |

Environmental conditions

| | |
|--|--------|
| ambient temperature during operation | -25 °C |
| <ul style="list-style-type: none"> • minimum • maximum | 55 °C |
| ambient temperature during storage | -50 °C |
| <ul style="list-style-type: none"> • minimum • maximum | 80 °C |

General Product Approval



[Confirmation](#)



[Miscellaneous](#)



Declaration of Conformity



Test Certificates

[Special Test Certificate](#)

[Type Test Certificates/Test Report](#)

Marine / Shipping



other

Environment

[Miscellaneous](#)

[Confirmation](#)

[Environmental Confirmations](#)

Further information

Information on the packaging

<https://support.industry.siemens.com/cs/ww/en/view/109813875>

Information- and Downloadcenter (Catalogs, Brochures,...)

<http://www.siemens.com/lowvoltage/catalogs>

Industry Mall (Online ordering system)

<https://mall.industry.siemens.com/mall/en/en/Catalog/product?mlfb=3NP1133-1CA20>

Service&Support (Manuals, Certificates, Characteristics, FAQs,...)

<https://support.industry.siemens.com/cs/ww/en/ps/3NP1133-1CA20>

Image database (product images, 2D dimension drawings, 3D models, device circuit diagrams, ...)

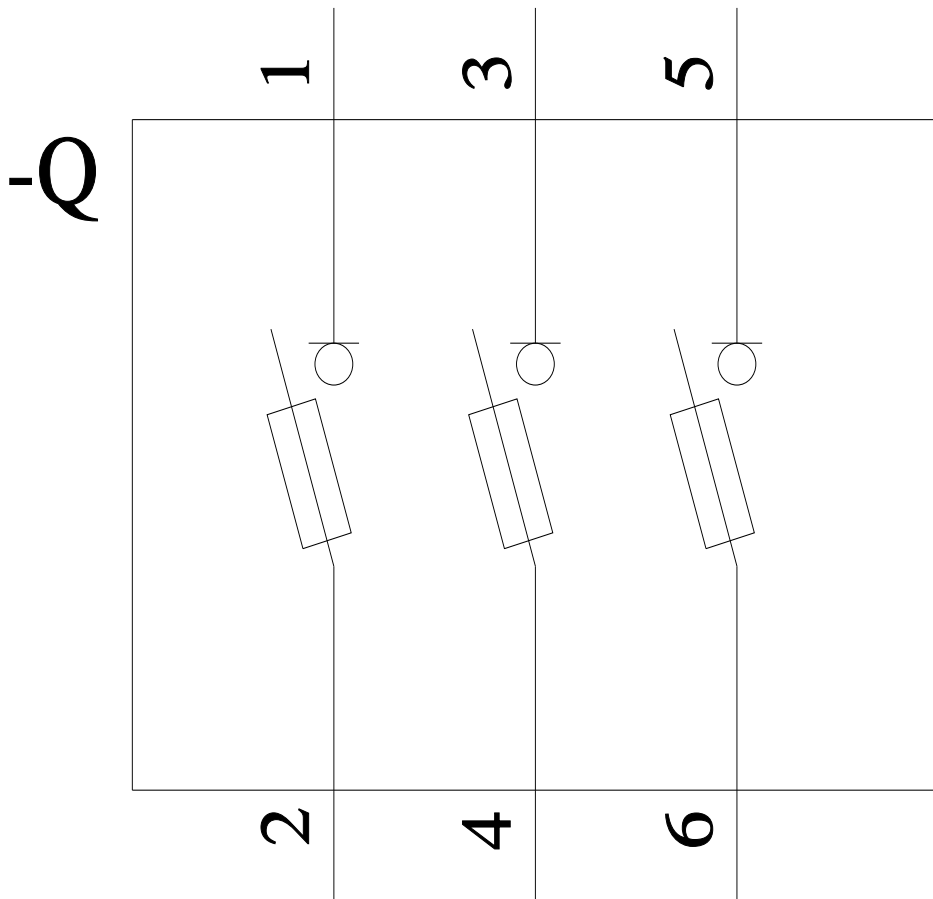
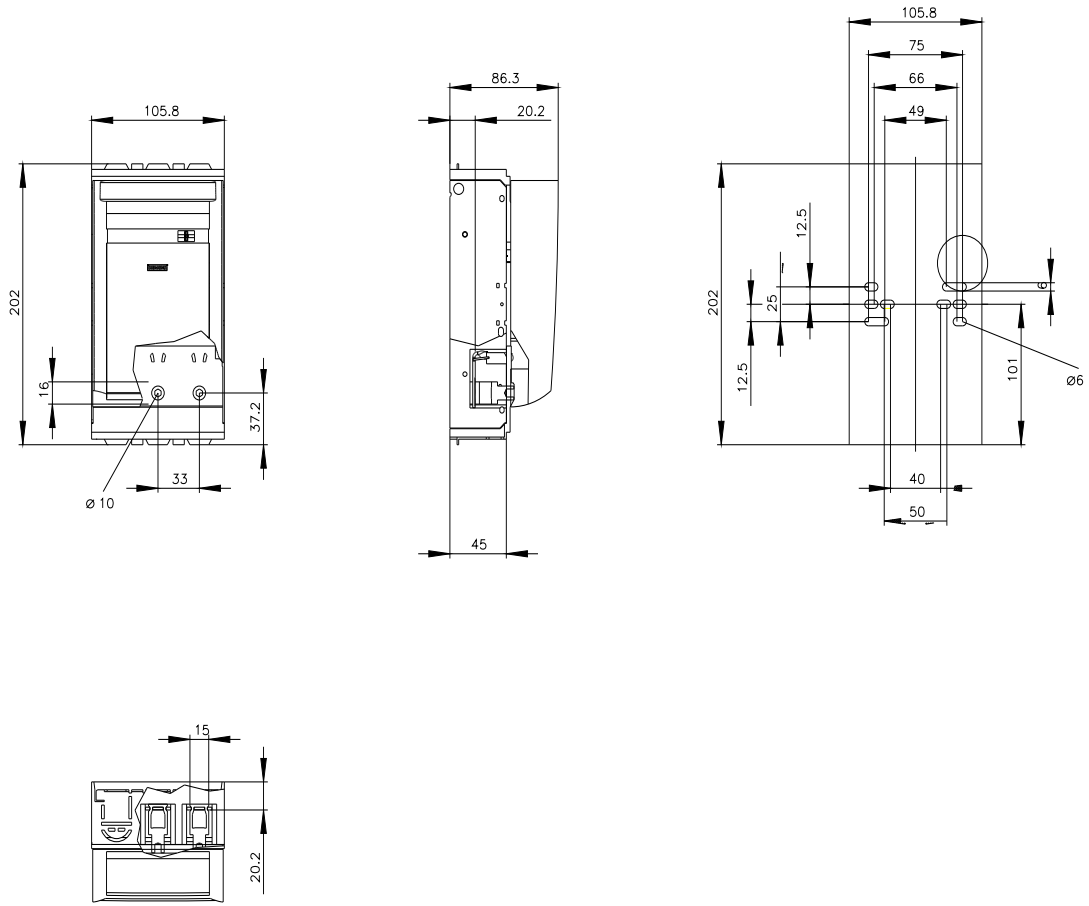
http://www.automation.siemens.com/bilddb/cax_en.aspx?mlfb=3NP1133-1CA20

CAX-Online-Generator

<http://www.siemens.com/cax>

Tender specifications

<http://www.siemens.com/specifications>



CB

