



CONTACTOR, AC-3, 4KW/400V, 1NO,
DC 220V 3-POLE, SZ S00 SCREW TERMINAL

General technical data:

product brand name		SIRIUS
Size of the contactor		S00
Product extension / auxiliary switch		Yes
Protection class IP / on the front		IP20
Protection against electrical shock		finger-safe
Degree of pollution		3
Installation altitude / at a height over sea level / maximum	m	2,000
Ambient temperature		
• during storage	°C	-55 ... +80
• during operating	°C	-25 ... +60
Shock resistance		
• at rectangular impulse		
• at DC		6,7g / 5 ms, 4,2g / 10 ms
• at sine pulse		
• at DC		10,5g / 5 ms, 6,6g / 10 ms
Impulse voltage resistance / rated value	kV	6
Insulation voltage / rated value	V	690
Mechanical operating cycles as operating time		
• of the contactor / typical		30,000,000

- of the contactor with added auxiliary switch block / typical
- of the contactor with added electronics-compatible auxiliary switch block / typical

10,000,000

5,000,000

Main circuit:**Number of NC contacts / for main contacts**

0

Number of NO contacts / for main contacts

3

Operating current

- at AC-1 / at 400 V
 - at 40 °C ambient temperature / rated value
 - at 60 °C ambient temperature / rated value
- at AC-2 / at 400 V / rated value
- at AC-3 / at 400 V / rated value
- at AC-4 / at 400 V / rated value

A	22
A	20
A	9
A	9
A	8.5

Operating current

- with 1 current path / at DC-1
 - at 24 V / rated value
 - at 110 V / rated value
- with 2 current paths in series / at DC-1
 - at 24 V / rated value
 - at 110 V / rated value
- with 3 current paths in series / at DC-1
 - at 24 V / rated value
 - at 110 V / rated value
- with 1 current path / at DC-3 / at DC-5
 - at 24 V / rated value
 - at 110 V / rated value
- with 2 current paths in series / at DC-3 / at DC-5
 - at 24 V / rated value
 - at 110 V / rated value
- with 3 current paths in series / at DC-3 / at DC-5
 - at 24 V / rated value
 - at 110 V / rated value

A	20
A	2.1
A	20
A	12
A	20
A	20
A	20
A	0.1
A	20
A	0.35
A	20
A	20

Service power

- at AC-2 / at 400 V / rated value
- at AC-3 / at 400 V / rated value
- at AC-4 / at 400 V / rated value

kW	4
kW	4
kW	4

Off-load operating frequency

- at AC
- at DC

1/h	10,000
1/h	10,000

Frequency of operation / at AC-1 / according to IEC 60947-6-2	1/h	1,000
Frequency of operation / at AC-2 / according to IEC 60947-6-2	1/h	750
Frequency of operation / at AC-3 / according to IEC 60947-6-2	1/h	750
Frequency of operation / at AC-4 / according to IEC 60947-6-2	1/h	250

Control circuit:

Type of voltage / of the controlled supply voltage		DC
Operating range factor control supply voltage rated value / of the magnet coil • for DC		0.8 ... 1.1
Pull-in power / of the solenoid / for DC	W	4
Holding power / of the solenoid / for DC	W	4
Closing delay • at DC	ms	30 ... 100
Opening delay • at DC	ms	7 ... 13
Arcing time	ms	10 ... 15

Auxiliary circuit:

Contact reliability / of the auxiliary contacts		1 faulty switching per 100 million (17 V, 1 mA)
Number of NC contacts / for auxiliary contacts / instantaneous switching		0
Number of NO contacts / for auxiliary contacts / instantaneous switching		1
Operating current / of the auxiliary contacts • at AC-12 / maximum • at AC-15 • at 230 V • at 400 V • at DC-12 • at 48 V • at 60 V • at 110 V • at 220 V • at DC-13 • at 24 V • at 48 V • at 60 V • at 110 V • at 220 V	A	10 10 3 6 6 3 1 10 2 2 1 0.3

Short-circuit:

Design of the fuse link <ul style="list-style-type: none"> • for short-circuit protection of the auxiliary switch / required • for short-circuit protection of the main circuit <ul style="list-style-type: none"> • with type of assignment 1 / required • at type of coordination 2 / required 		fuse gL/gG: 10 A gL/gG LV HRC 3NA, DIAZED 5SB, NEOZED 5SE: 35 A gL/gG LV HRC 3NA, DIAZED 5SB, NEOZED 5SE: 20A
--	--	---

Installation/mounting/dimensions:		
mounting position		+/-180° rotation possible on vertical mounting surface; can be tilted forward and backward by +/- 22.5° on vertical mounting surface
Type of mounting		screw and snap-on mounting onto 35 mm standard mounting rail according to DIN EN 50022
Type of fixing/fixation / series installation		Yes
Width	mm	45
Height	mm	57.5
Depth	mm	73
Distance, to be maintained, to the ranks assembly / sideways	mm	0
Distance, to be maintained, to earthed part / sideways	mm	6

Connections:		
Design of the electrical connection <ul style="list-style-type: none"> • for main current circuit • for auxiliary and control current circuit 		screw-type terminals screw-type terminals
Type of the connectable conductor cross-section <ul style="list-style-type: none"> • for main contacts <ul style="list-style-type: none"> • solid • finely stranded <ul style="list-style-type: none"> • with conductor end processing • for AWG conductors / for main contacts • for auxiliary contacts <ul style="list-style-type: none"> • solid • finely stranded <ul style="list-style-type: none"> • with conductor end processing • for AWG conductors / for auxiliary contacts 		2x (0.5 ... 1.5 mm ²), 2x (0.75 ... 2.5 mm ²), 2x 4 mm ² 2x (0.5 ... 1.5 mm ²), 2x (0.75 ... 2.5 mm ²) 2x (20 ... 16), 2x (18 ... 14), 2x 12 2x (0.5 ... 1.5 mm ²), 2x (0.75 ... 2.5 mm ²), 2x 4 mm ² 2x (0.5 ... 1.5 mm ²), 2x (0.75 ... 2.5 mm ²) 2x (20 ... 16), 2x (18 ... 14), 2x 12

Certificates/approvals:

General Product Approval	Functional Safety / Safety of Machinery	Declaration of Conformity
---------------------------------	--	----------------------------------



CCC



CSA



GOST



UL

[Type Examination](#)



EG-Konf.

Test Certificates

[Special Test Certificate](#)

Shipping Approval



ABS



BUREAU VERITAS



DNV



GL



LRS



PRS

Shipping Approval

other



RINA



RMRS

[Confirmation](#)



VDE

UL/CSA ratings:

yielded mechanical performance (hp)

- for single-phase squirrel cage motors
 - at 110/120 V / rated value
 - at 230 V / rated value
- for three-phase squirrel cage motors
 - at 200/208 V / rated value
 - at 220/230 V / rated value
 - at 460/480 V / rated value
 - at 575/600 V / rated value

hp	0.33
hp	1
hp	2
hp	3
hp	5
hp	7.5

Operating current (FLA) / for three-phase squirrel cage motors

- at 480 V / rated value
- at 600 V / rated value

A	7.6
A	9

Contact rating designation / for auxiliary contacts / according to UL

A600 / Q600

Sicherheitsrelevante Kenngrößen:

B10 value / with high demand rate

- according to SN 31920

1,000,000

T1 value / for proof test interval or service life

- according to IEC 61508

a 20

Proportion of dangerous failures

- with low demand rate / according to SN 31920
- with high demand rate / according to SN 31920

% 40
% 73

Failure rate (FIT value) / with low demand rate		
<ul style="list-style-type: none"> according to SN 31920 	FIT	100
Product function		
<ul style="list-style-type: none"> mirror contact to IEC 60947-4-1 comment positively driven operation to IEC 60947-5-1 		Yes with 3RH29 No

Further information:

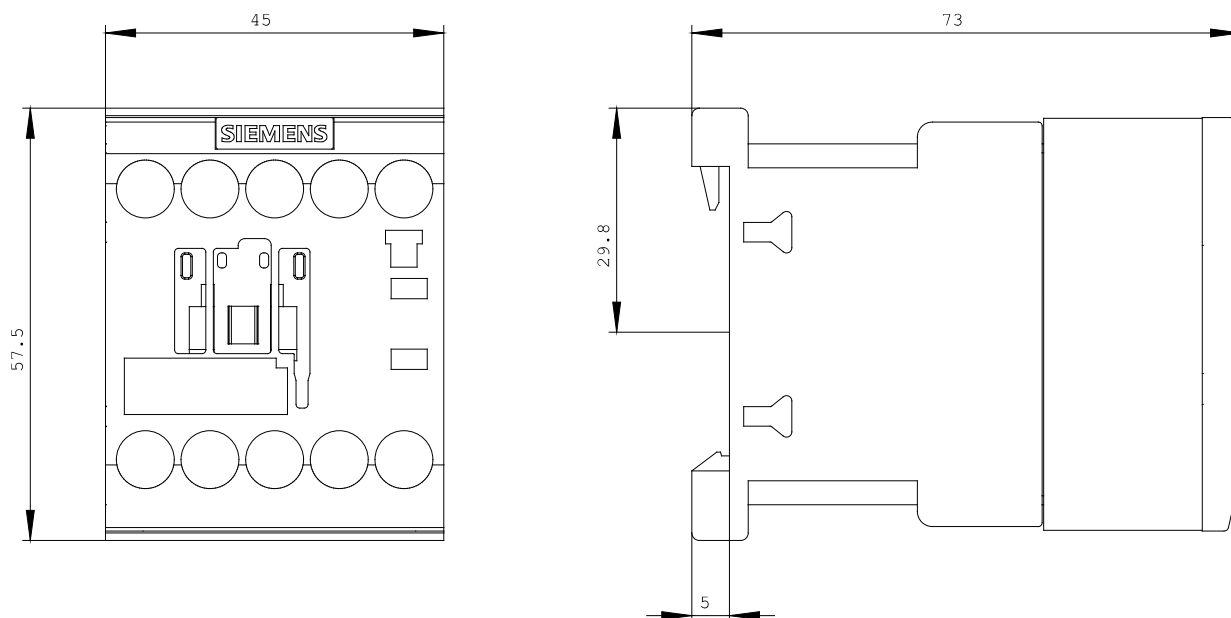
Information- and Downloadcenter (Catalogs, Brochures,...)
<http://www.siemens.com/industrial-controls/catalogs>

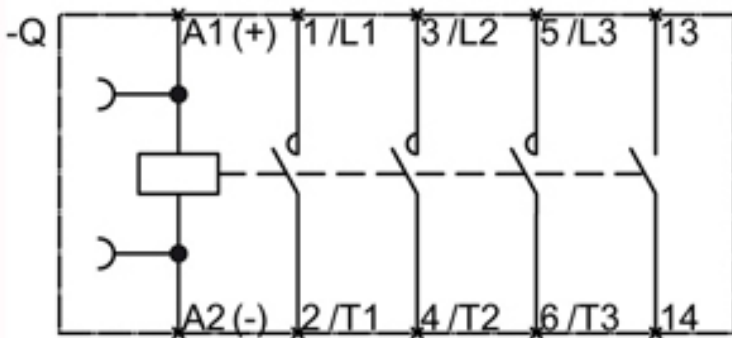
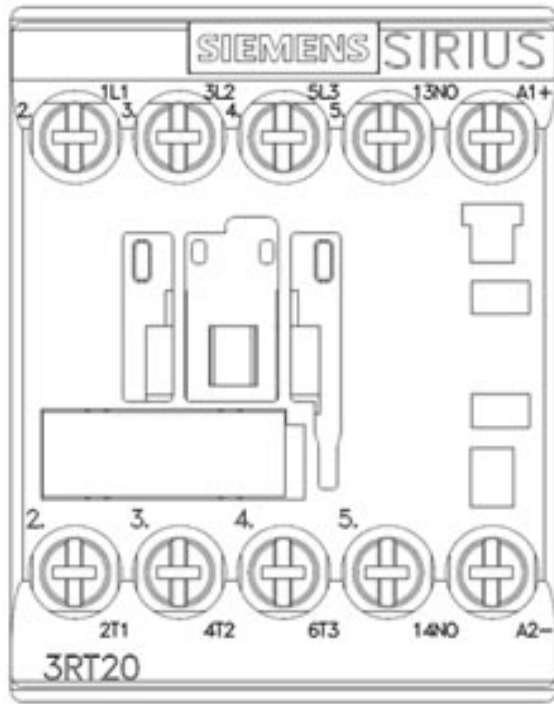
Industry Mall (Online ordering system)
<http://www.siemens.com/industrial-controls/mall>

Cax online generator:
<http://www.siemens.com/cax>

Service&Support (Manuals, Certificates, Characteristics, FAQs,...)
<http://support.automation.siemens.com/WW/view/en/3RT2016-1BM41/all>

Image database (product images, 2D dimension drawings, 3D models, device circuit diagrams, ...)
http://www.automation.siemens.com/bilddb/cax_en.aspx?mlfb=3RT2016-1BM41





last change:

Dec 3, 2012